

Tuesday, December 10th.

22:00 h - Reception to the Hotel in Lugo.

Puerta de San Pedro https://www.exehotels.com/exe-puerta-de-san-pedro.html?td=b10ga01&id_referer=ADWORDS&gclid=CjwKCAiAob3vBRAUEiwAlbs5TqhfOJfy-FqBcsEQIFp_ttaWWCpwpSM9OGTDytWZTBvl88qtNZ8LHhoCtEIQAvD_BwE

Wednesday, December 11th.

10:00 h - Visit to the University of Santiago de Compostela-Campus of Lugo (Terra Campus)

<http://www.usc.es/campusterra/es>

12:00 h – Visit to experimental farm (Granja Gayoso Castro) www.deputacionlugo.gal/,

14:00- Typical food - <https://www.castroderei.gal/es/feria-de-castro-riberas-de-lea/>

Pedro Fiz and Manuel Marey

Thursday, December 12th.

10:00 h - Visit to dairy products and food Technologies (APLTA) www.aplta.es/index.php/ES/

Luis Aldeanueva

12:00 h – Meeting with researchers of PROePLA group www.proepla.com/

Luis Franco, Alba López, Javier Cancela and Jorge Dafonte

Friday, December 13th.

10:00 h - Meeting with CECRA system agricultural advice -

<http://www.usc.es/campusterra/es/content/el-campus-terra-de-la-usc-lidera-en-espa%C3%B1a-la-certificaci%C3%B3n-y-la-formaci%C3%B3n-de-asesores>

Elena López

12:00 h - Meeting with researchers of ECOAGROSOC and LABORATE groups -

<http://www.usc.es/ecoagra/presentacion/> // <http://laborate.usc.es/ecuidti/>

Ana García and Francisco Ónega



Project Erasmus + «KA2-Cooperation for innovation and exchange of good
Practices-EAC/A03/2016»

Diary of the visit of the Mongolian representation in Lugo

10-13 December 2019

JAVIER JOSE CANCELA BARRIO
PhD Agronomy
Fertigation and crop water requeriments

javierjose.cancela@usc.es
+34 678920897
Skype: vegadepumar_1
<https://orcid.org/0000-0003-2089-7778>

'Laboratorio de Hidráulica e Hidroloxía', December 2019





Departamento de Ingeniería Agroforestal
GI-1716 – Proyectos y Planificación



Main research lines



Biosystems Engineering

Volume 94, Issue 1, May 2006, Pages 151-163



Agricultural Water Management

Volume 112, September 2012, Pages 75-87



Modelling for Improved Irrigation Water Management in a Temperate Region of Northern Spain

J.J. Cancela ¹ , T.S. Cuesta ¹, X.X. Neira ¹, L.S. Pereira ² 

[Show more](#)

<https://doi.org/10.1016/j.biosystemseng.2006.02.010>

[Get rights and content](#)

Using the dual- K_c approach to model evapotranspiration of Albariño vineyards (*Vitis vinifera* L. cv. Albariño) with consideration of active ground cover

M. Fandiño ^a, J.J. Cancela ^a , B.J. Rey ^a, E.M. Martínez ^a, R.G. Rosa ^b, L.S. Pereira ^b 

[Show more](#)

<https://doi.org/10.1016/j.agwat.2012.06.008>

[Get rights and content](#)



Project Erasmus + «KA2-Cooperation for innovation and exchange of good Practices-EAC/A03/2016»

Diary of the visit of the Mongolian representation in Lugo



Agricultural Water Management

Volume 151, 31 March 2015, Pages 52-63



Automatic irrigation system based on dual crop coefficient, soil and plant water status for *Vitis vinifera* (cv Godello and cv Mencía)

J.J. Cancela , M. Fandiño, B.J. Rey, E.M. Martínez

[Show more](#)

<https://doi.org/10.1016/j.agwat.2014.10.020>

[Get rights and content](#)



Industrial Crops and Products

Volume 77, 23 December 2015, Pages 204-217



Assessing and modelling water use and the partition of evapotranspiration of irrigated hop (*Humulus Lupulus*), and relations of transpiration with hops yield and alpha-acids

M. Fandiño , J.L. Olmedo , E.M. Martínez , J. Valladares , P. Paredes , B.J. Rey , M. Mota , J.J. Cancela , L.S. Pereira 

[Show more](#)

<https://doi.org/10.1016/j.indcrop.2015.08.042>

[Get rights and content](#)





Project Erasmus + «KA2-Cooperation for innovation and exchange of good Practices-EAC/A03/2016»

Diary of the visit of the Mongolian representation in Lugo

10-13 December 2019



PUBLISH ABOUT BROWSE

SEARCH



advanced search

OPEN ACCESS PEER-REVIEWED
RESEARCH ARTICLE

Integrated Analysis of Climate, Soil, Topography and Vegetative Growth in Iberian Viticultural Regions

Heider Fraga , Aureliano C. Malheiro, José Moutinho-Pereira, Rita M. Cardoso, Pedro M. M. Soares, Javier J. Cancela, Joaquim G. Pinto, João A. Santos

Published: September 24, 2014 • <https://doi.org/10.1371/journal.pone.0108078>

Instituto Nacional de Investigación y Tecnología Agraria y Alimentaria (INIA)
Available online at www.inia.es/ijar

Spanish Journal of Agricultural Research 2011, 9(1): 313-328
ISSN: 1695-971X
eISSN: 2171-9292

Review. Use of psychrometers in field measurements of plant material: accuracy and handling difficulties

E. M. Martinez, J. J. Cancela*, T. S. Cuesta and X. X. Neira

Departamento de Ingeniería Agroforestal. Universidad de Santiago de Compostela. 27002 Lugo, Spain





Project Erasmus + «KA2-Cooperation for innovation and exchange of good Practices-EAC/A03/2016»

Diary of the visit of the Mongolian representation in Lugo

10-13 December 2019



Agricultural Water Management

Volume 170, 31 May 2016, Pages 99-109



Effects of climate variability on irrigation scheduling in white varieties of *Vitis vinifera* (L.) of NW Spain

Javier José Cancela ^a, ^b, , , Emiliano Trigo-Córdoba ^a, ^b, Emma María Martínez ^a, Benjamín Jesús Rey ^a, Yolanda Bouzas-Cid ^b, María Fandino ^a, José Manuel Mtrás-Avalos ^b

 Show more

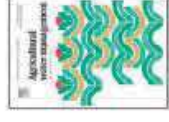
<https://doi.org/10.1016/j.agwat.2016.01.004>

[Get rights and content](#)



Agricultural Water Management

Volume 75, Issue 2, 15 July 2005, Pages 137-151



Evaluation of water-use in traditional irrigation: An application to the Lemos Valley irrigation district, northwest of Spain

X.X. Neira, C.J. Álvarez, T.S. Cuesta ^a, , J.J. Cancela

 Show more

<https://doi.org/10.1016/j.agwat.2004.12.007>

[Get rights and content](#)





Project Erasmus + «KA2-Cooperation for innovation and exchange of good Practices-EAC/A03/2016»

Diary of the visit of the Mongolian representation in Lugo

10-13 December 2019

Water Resources Management (2006) 20: 817–828
DOI: 10.1007/s11269-005-9009-8

© Springer 2006

Water Resources Management (2005) 19: 23–36

© Springer 2005

Wastewater Management Evaluation by Using the Opinion Survey in Galicia, Spain

T. S. CUESTA*, C. J. ALVAREZ, J. J. CANCELA, D. MIRANDA and X. X. NEIRA
Department of Agroforestry Engineering University of Santiago de Compostela, Spain
(* author for correspondence, e-mail: tcuesta@lugo.usc.es)

Water Resour Manage (2009) 23:2231–2247
DOI 10.1007/s11269-008-9379-9

Characterization of Irrigated Holdings in the Terra Chá Region of Spain: A First Step Towards a Water Management Model

C. J. ÁLVAREZ*, J. J. CANCELA and M. FANDIÑO
Department of Agroforestry Engineering, University of Santiago de Compostela, Lugo, Spain
(* author for correspondence, e-mail: proyca@lugo.usc.es)

WFD Indicators and Definition of the Ecological Status of Rivers

R. Carballo · J. J. Cancela · G. Iglesias · A. Marín ·
X. X. Neira · T. S. Cuesta





Project Erasmus + «KA2-Cooperation for innovation and exchange of good Practices-EAC/A03/2016»

Diary of the visit of the Mongolian representation in Lugo

10-13 December 2019



Food Chemistry

Volume 278, 25 April 2019, Pages 636-643



LWT - Food Science and Technology

Volume 85, Part B, November 2017, Pages 345-352



Assessment fertigation effects on chemical composition of *Vitis vinifera* L. cv. Albariño

Mar Vilanova ^a, María Fandiño ^b, Samuel Frutos-Puerto ^{a,c}, Javier J. Canceña ^b

[Show more](#)

<https://doi.org/10.1016/j.foodchem.2018.11.105>

Under a Creative Commons license

[Get rights and content](#)

[open access](#)

Influence of irrigation on consumer acceptability of Albariño and Godello wines

José Manuel Mirás-Avalos ^a, María Fandiño ^b, Emiliano Trigo-Córdoba ^{a,b}, Benjamín J. Rey ^b, Ignacio Orriols ^a, Javier José Canceña ^b

[Show more](#)

<https://doi.org/10.1016/j.lwt.2017.01.076>

[Get rights and content](#)





Project Erasmus + «KA2-Cooperation for innovation and exchange of good Practices-EAC/A03/2016»

Diary of the visit of the Mongolian representation in Lugo

10-13 December 2019



Agricultural Water Management

Volume 221, 20 July 2019, Pages 202-210



Agricultural Water Management

Volume 183, 31 March 2017, Pages 70-77



Discrimination ability of leaf and stem water potential at different times of the day through a meta-analysis in grapevine (*Vitis vinifera* L.)

L.G. Santesteban^a, R. Riquelme^a, C. Miranda^a, D. Marín^a, B. Sesma^a, D.S. Intrigliolo^b, J.M. Mirás-Avalos^b, J.M. Escalona^c, A. Montoro^d, F. de Herralde^e, P. Baeza^f, P. Romero^g, J. Yuste^h, D. Uriarteⁱ, J. Martínez-Gascueña^j, J.J. Cancela^k, V. Pinillos^l, M. Loidi^a, J. Urrestarazu^a, J.B. Royo^a

[Show more](#)

<https://doi.org/10.1016/j.agwat.2019.04.020>

[Get rights and content](#)

Discrimination of irrigation water management effects in pergola trellis system vineyards using a vegetation and soil index

J.J. Cancela^a, M. Fandiño, B.J. Rey, J. Dafonte, X.P. González

[Show more](#)

<https://doi.org/10.1016/j.agwat.2016.11.003>

[Get rights and content](#)





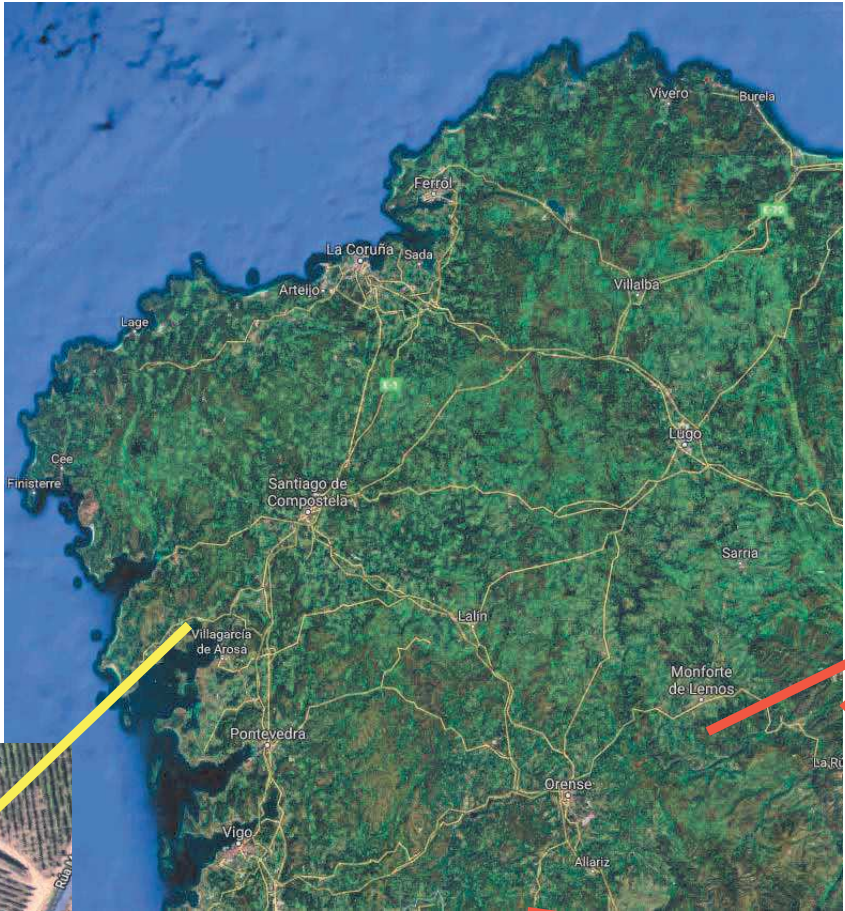
Departamento de Ingeniería Agroforestal
GI-1716 – Proyectos y Planificación



Some examples

Research and Innovation Projects

RISKAQUASOIL - IAA



Ribeira Sacra

Viñedo en terrazas

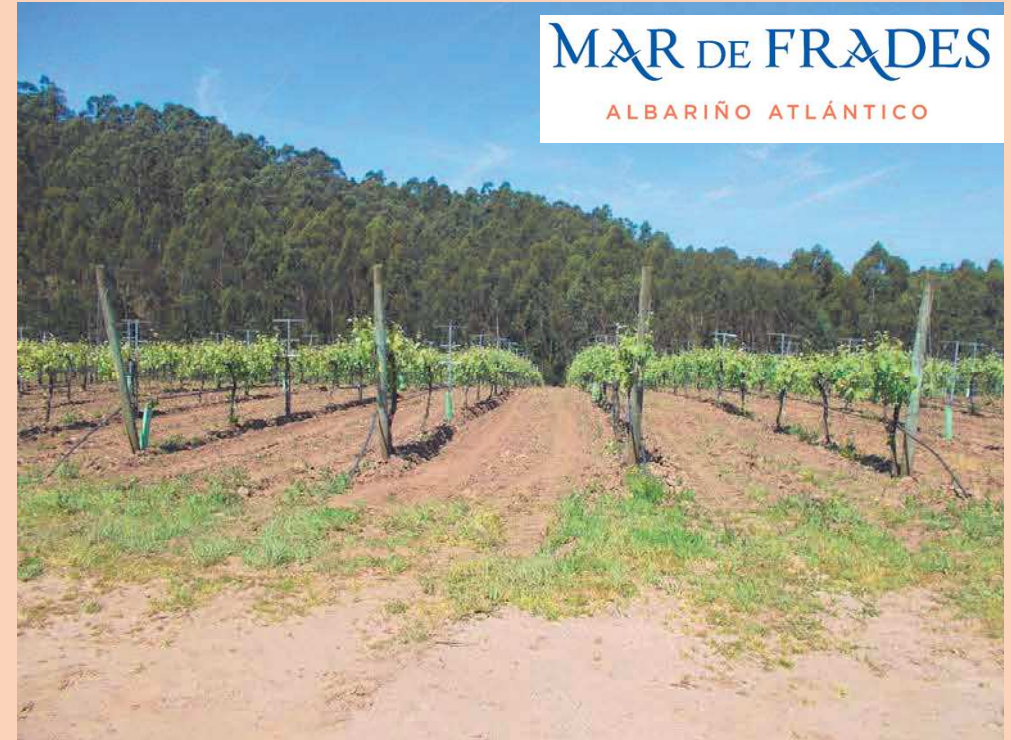
Inceptisol desarrollado sobre esquistos

Variedad tinta: Mencía (7 años, marco 2 x 1,5 m)

Secano



Descripción de las parcelas de estudio



Rías Baixas

Viñedo en el sentido de la pendiente

Inceptisol desarrollado sobre granito

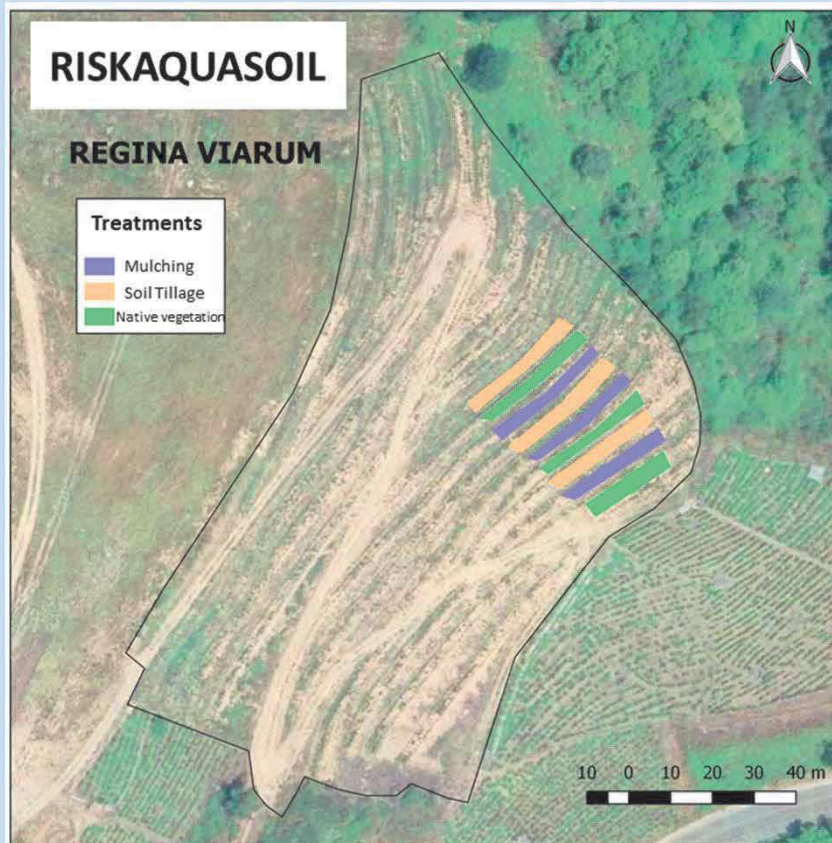
Variedad blanca: Albariño (14 años, marco 3 x 2,5 m)

Riego

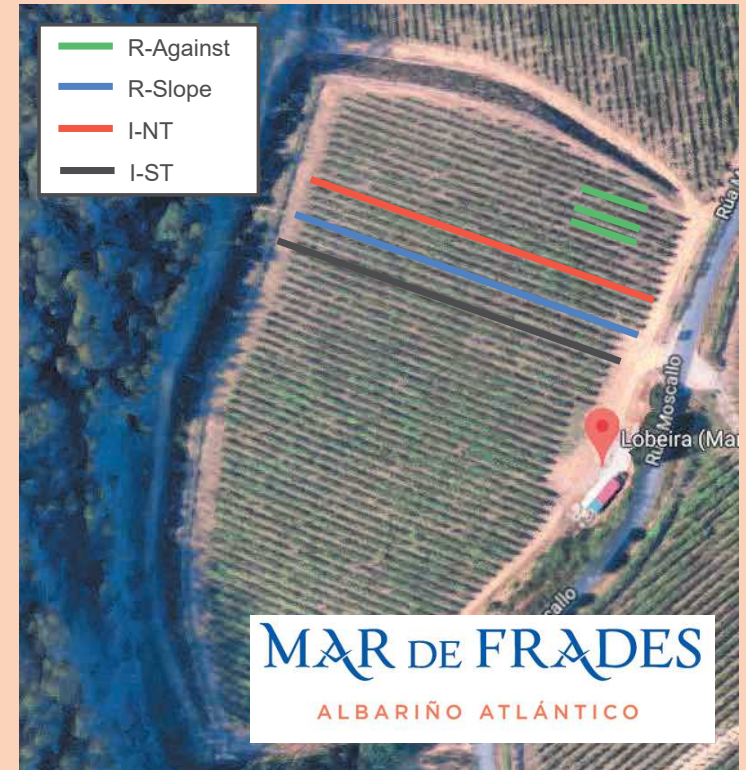
Ribeira Sacra Viñedo en terrazas

Tres tratamientos:

- 1) Vegetación espontánea
- 2) Acolchado (Paja)
- 3) Laboreo



Tratamientos experimentales



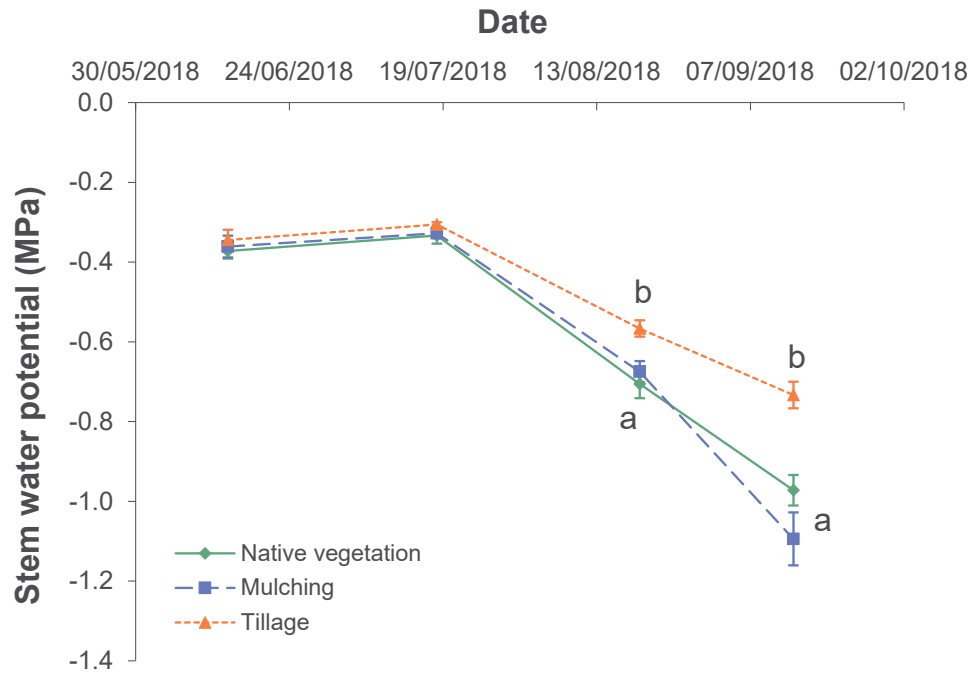
Rías Baixas

Viñedo en el sentido de la pendiente

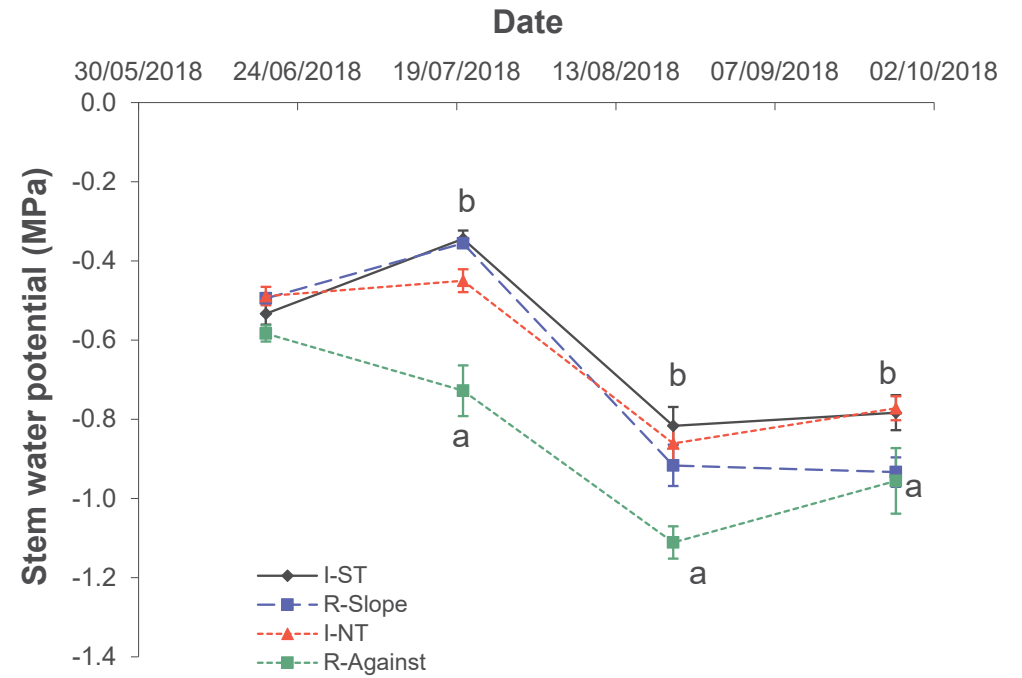
Cuatro tratamientos:

- 1) Secano en contra de la pendiente (R-Against)
- 2) Secano en el sentido de la pendiente (R-Slope)
- 3) Riego con vegetación espontánea (I-NT)
- 4) Riego con laboreo (I-ST)

Ribeira Sacra



Resultados preliminares



Rías Baixas

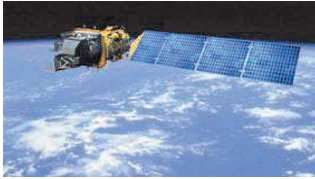
Remote sensing

Satellite images

LandSat 7
(2009 – 2018)



LandSat 8
(2015 – 2018)



Sentinel 2
(2016 – 2018)



Images of UAVS

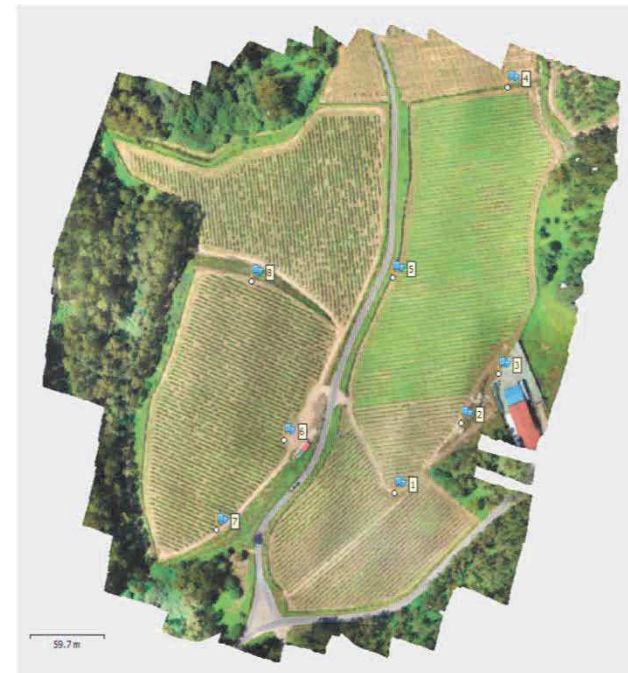
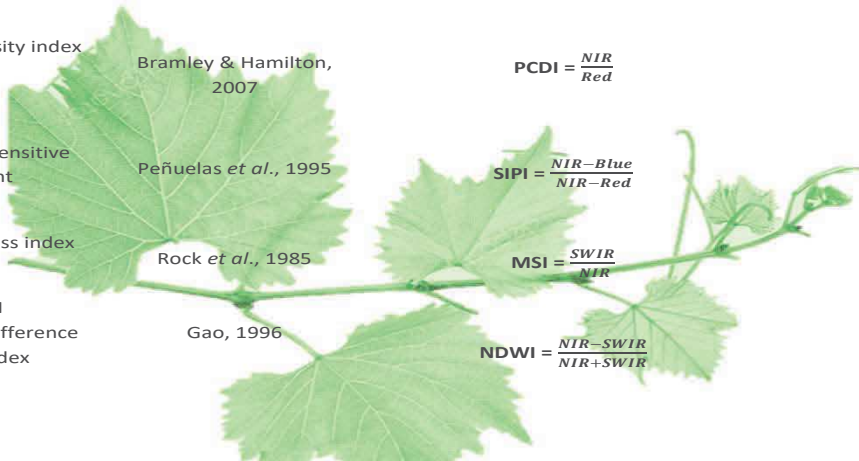
Flights:

August 22, 2018 NDVI, Lobeira (D.O Rías Baixas)
June 27, 2018

Comparison of satellite images vs UAVS 2016 - 2018

INDICE	REFERENCIA	FÓRMULA
--------	------------	---------

NDVI Normalized difference vegetation index	Rouse <i>et al.</i> , 1974	$\text{NDVI} = \frac{\text{NIR} - \text{Red}}{\text{NIR} + \text{Red}}$
NDRE Normalized difference red edge index	Fitzgerald <i>et al.</i> , 2010	$\text{NDRE} = \frac{\text{NIR} - \text{Red edge}}{\text{NIR} + \text{Red edge}}$
SAVI Soil-adjusted vegetation index	Huete, 1988	$\text{SAVI} = \frac{\text{NIR} - \text{Red}}{\text{NIR} + \text{Red} + L} \cdot 1 + L$
PCDI Plant cell density index	Bramley & Hamilton, 2007	$\text{PCDI} = \frac{\text{NIR}}{\text{Red}}$
SIPI Structure insensitive pigment	Peñuelas <i>et al.</i> , 1995	$\text{SIPI} = \frac{\text{NIR} - \text{Blue}}{\text{NIR} - \text{Red}}$
MSI Moisture stress index	Rock <i>et al.</i> , 1985	$\text{MSI} = \frac{\text{SWIR}}{\text{NIR}}$
NDWI Normalized difference water index	Gao, 1996	$\text{NDWI} = \frac{\text{NIR} - \text{SWIR}}{\text{NIR} + \text{SWIR}}$



Compton of satellite images

Remote sensing

LANDSAT 7



2016 23/08/2016



2017 10/08/2017



2018 04/08/2018

LANDSAT 8



2016 15/08/2016



2017 02/08/2017



2018 05/08/2018

SENTINEL 2



2016 11/08/2016

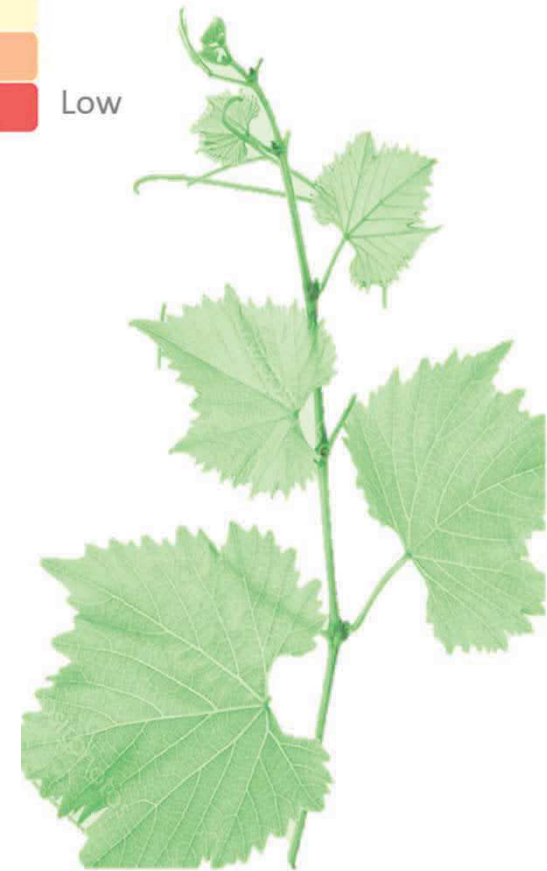


2017 11/08/2017

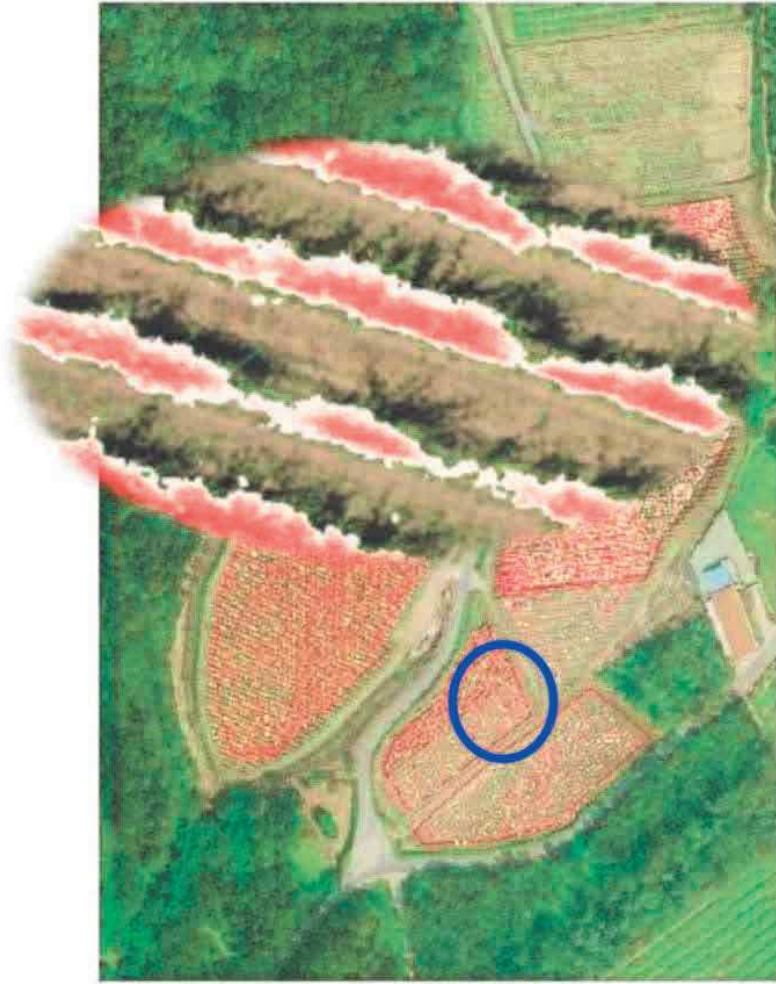


2018 11/08/2018

LEGEND



UAV Images - NDVI



JUNIO



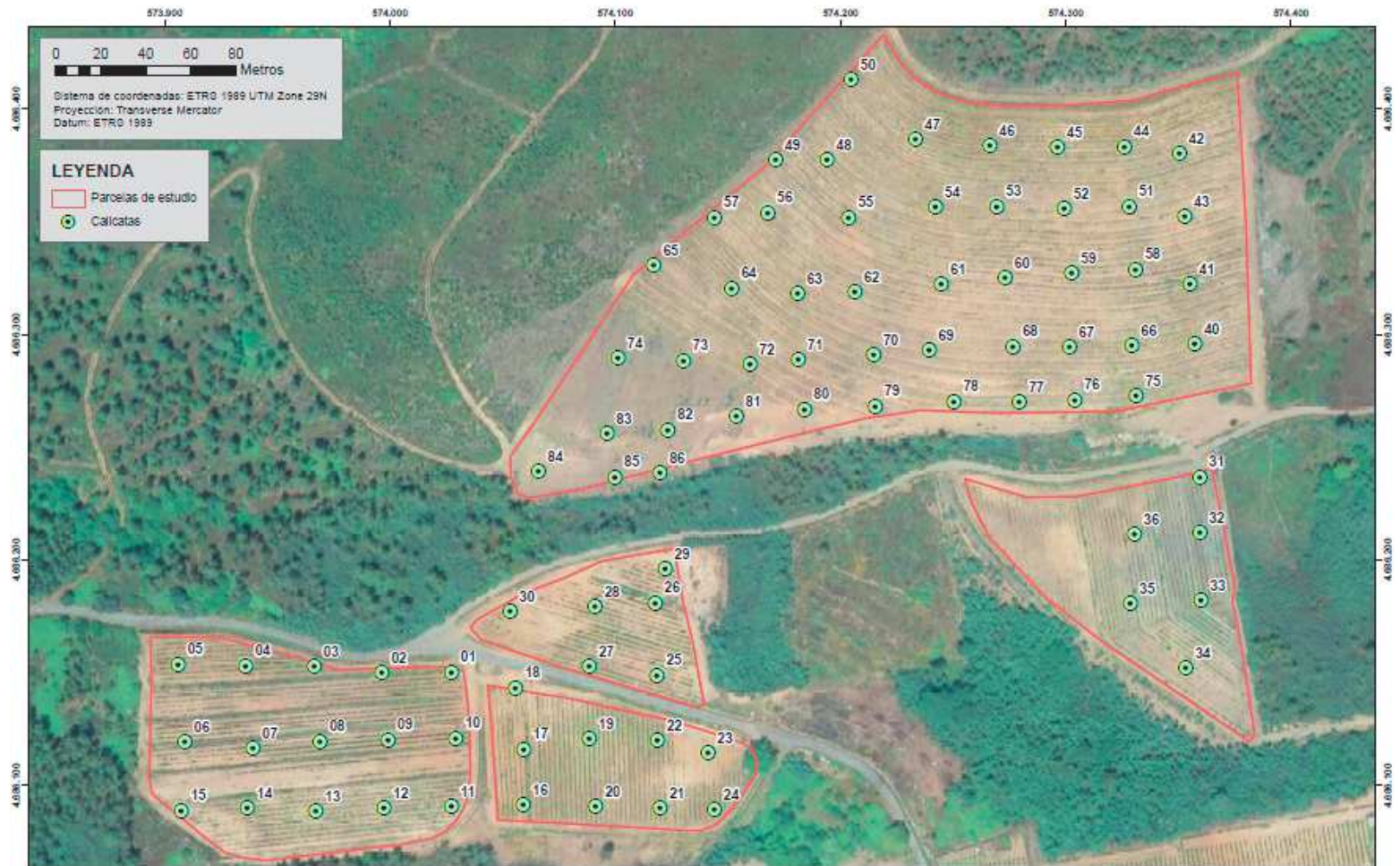
AGOSTO



Vineyard zoning

cume
do avia
viño ecolóxico, viño ribeiro.

evega
Estación de Viticultura
e Enoloxía de Galicia



Vineyard zoning

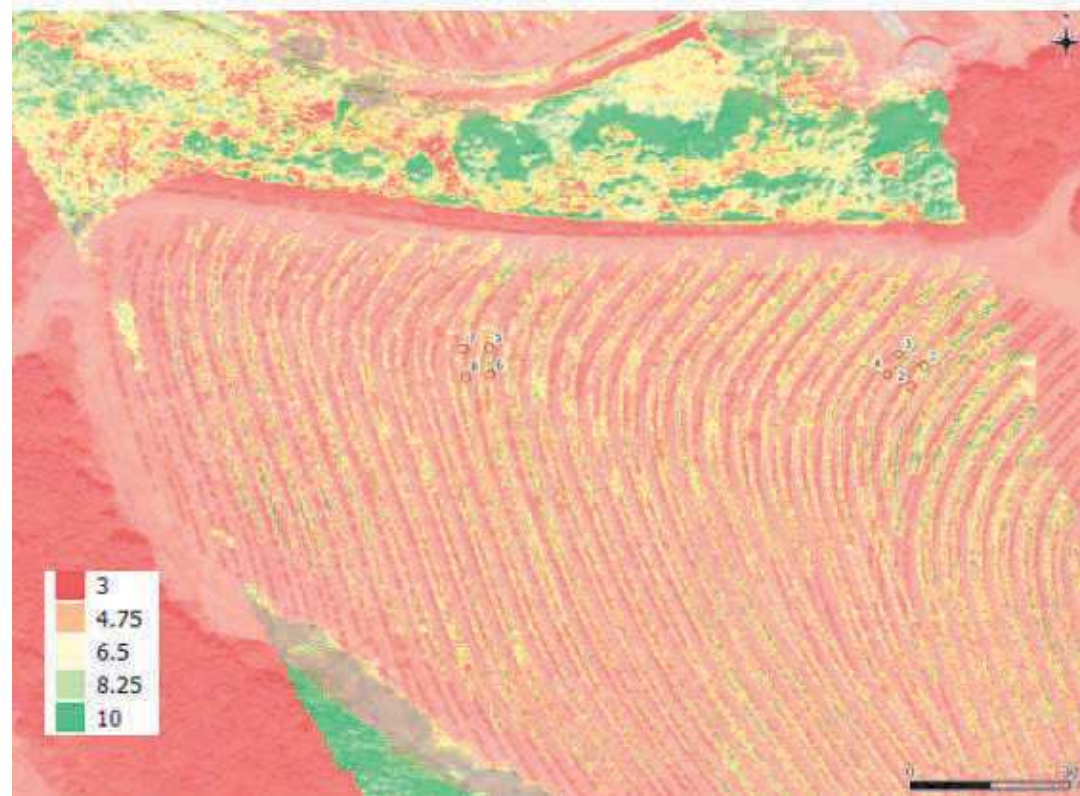


cume
do avia
viño ecolóxico, viño ribeiro.

evega

Estación de Viticultura
e Enoloxía de Galicia

Project “ecoVINE”





GI-1716 PROYECTOS Y PLANIFICACIÓN
UNIVERSIDAD DE SANTIAGO DE COMPOSTELA

VINOSOST

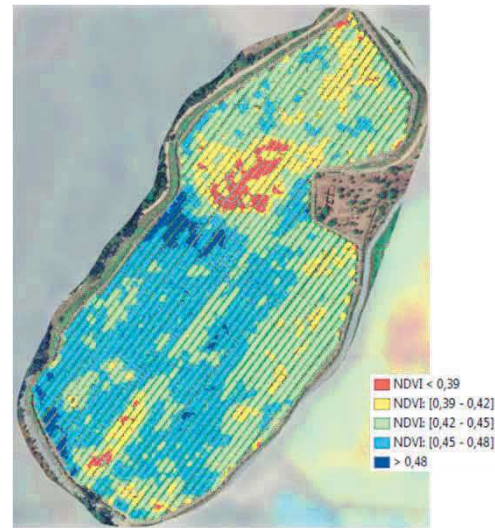
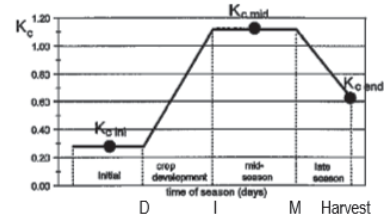




Fertigation and irrigation management



Sistema Conducción	Fase Inicial	Fase Media	Fase Final
Espaldera	0,40	0,75	0,60
Parral	0,55	0,90	0,75





EVALUACIÓN DEL POTENCIAL DE LA VARIEDAD BLANCO LEXÍTIMO EN
RIBEIRA SACRA, PARA EL DESARROLLO DE NUEVOS VINOS DE GAMA
PREMIUM

BlancSacro



Centro para el
Desarrollo
Tecnológico
Industrial

MAR DE FRADES

ALBARIÑO ATLÁNTICO

Proyecto ALBASOUL-17

ESTRATEGIAS BIOTECNOLÓGICAS PARA OPTIMIZAR EL MANEJO DEL
VARIETAL ALBARIÑO EN LA ELABORACIÓN DE VINOS TRANQUILOS Y
ESPUMOSOS EN LA D.O. RIAS BAIXAS

Vinesalt

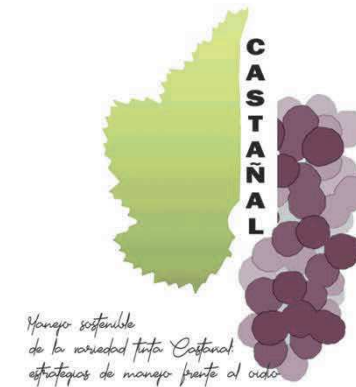


Centro para el
Desarrollo
Tecnológico
Industrial

MANEXO SOSTIBLE DA VARIEDADE TINTA CASTAÑAL: ESTRATEGIAS DE MANEXO FRONTE AO OIDIO



Grupo Operativo Autonómico – 2018



Viñas e Terras do Pazo SL - Señorío de Rubios SL
Exp. FEADER 2018/032B



evega Estación de Viticultura
e Enoloxía de Galicia



XUNTA DE GALICIA
CONSELLERÍA DO MEDIO RURAL



Unión Europea
Fondo Europeo Agrícola
de Desarrollo Rural
Europa invierte en las zonas rurales



FERVIÑA OPERATIONAL GROUP - INTEGRATED FERTILIZATION SYSTEM IN THE AGRICULTURAL WINE-GROWING SECTOR

Fundación Empresa-Universidad Gallega (FEUGA), Cooperativa Vitivinícola do Ribeiro (Viña Costeira Winery), Cooperativa Vitivinícola Arosuana (Paco&Lola Winery), Axencia Galega de Calidade Alimentaria through the Estación de Viticultura e Enoloxía de Galicia (AGACAL-EVEGA) and the University of Santiago de Compostela through the research Group of Projects and Planification (USC) participate in FERVIÑA, a Galician operational group whose main goal is the development of solutions for the sustainable fertilization in the viticulture sector of this wine-growing region.



XUNTA
DE GALICIA



AGACAL
AXENCIA GALEGA
DA CALIDADE ALIMENTARIA



PROEPLA
GI-1716 PROYECTOS Y PLANIFICACIÓN



FUNDACIÓN EMPRESA - UNIVERSIDAD GALLEGA

Research Group

Agroforestry Engineering Department
GI-1716 – Projects and Planification



**Javier J
Cancela Barrio**
PhD Agronomy



**Benjamín J
Rey Sanjurjo**
Agriculture Eng.



**Jorge
Dafonte Dafonte**
PhD Agronomy



**María
Fandiño Beiro**
Agronomy Eng.



**José M
Mirás Avalos**
PhD Biology



**Xesús Pablo
González Vázquez**
PhD Agronomy





Project Erasmus + «KA2-Cooperation for innovation and exchange of good
Practices-EAC/A03/2016»

Diary of the visit of the Mongolian representation in Lugo

10-13 December 2019

JAVIER JOSE CANCELA BARRIO
PhD Agronomy
Fertigation and crop water requeriments

javierjose.cancela@usc.es
+34 678920897
Skype: vegadepumar_1

'Laboratorio de Hidráulica e Hidroloxía', December 2019



Hydrology and other things

Jorge Dafonte Dafonte

jorge.dafonte@usc.es

<https://publons.com/researcher/1703901/jorge-dafonte/publications/>



Project Erasmus + «KA2-Cooperation for innovation and exchange of good
Practices-EAC/A03/2016»

Diary of the visit of the Mongolian representation in Lugo

10-13 December 2019

Research topics

- **Hydrological models. Impact of climate change scenarios on water resources**
- **Geophysical methods for the study of groundwater**
- **Geostatistics**
- **Open hardware in agriculture**



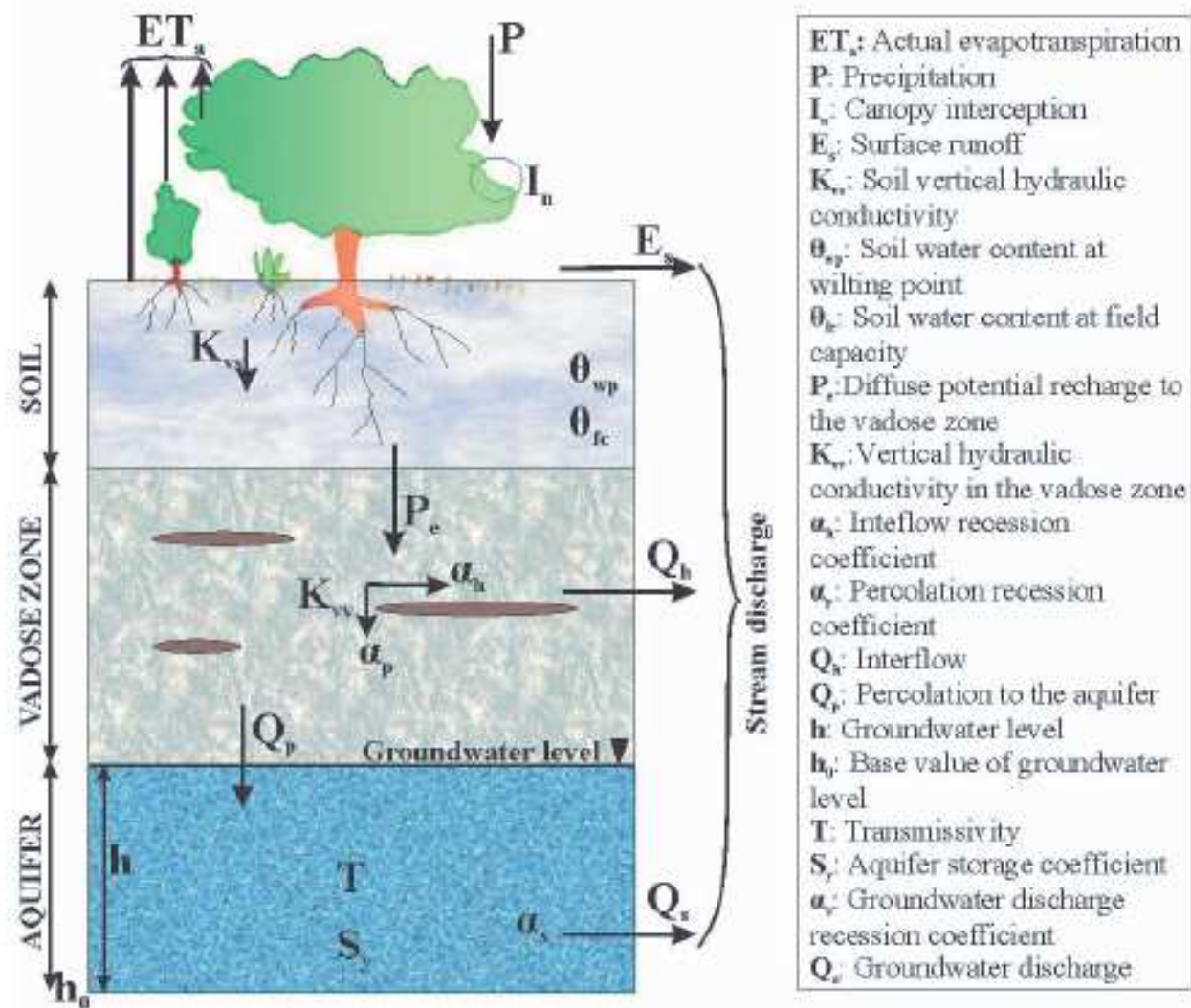


Fig. 2. Main components of water balance considered under the framework of the computer program Visual Balan (Samper et al., 2005).

➤ Assessing the impact of future climate change on groundwater recharge in Galicia-Costa, Spain (2013):

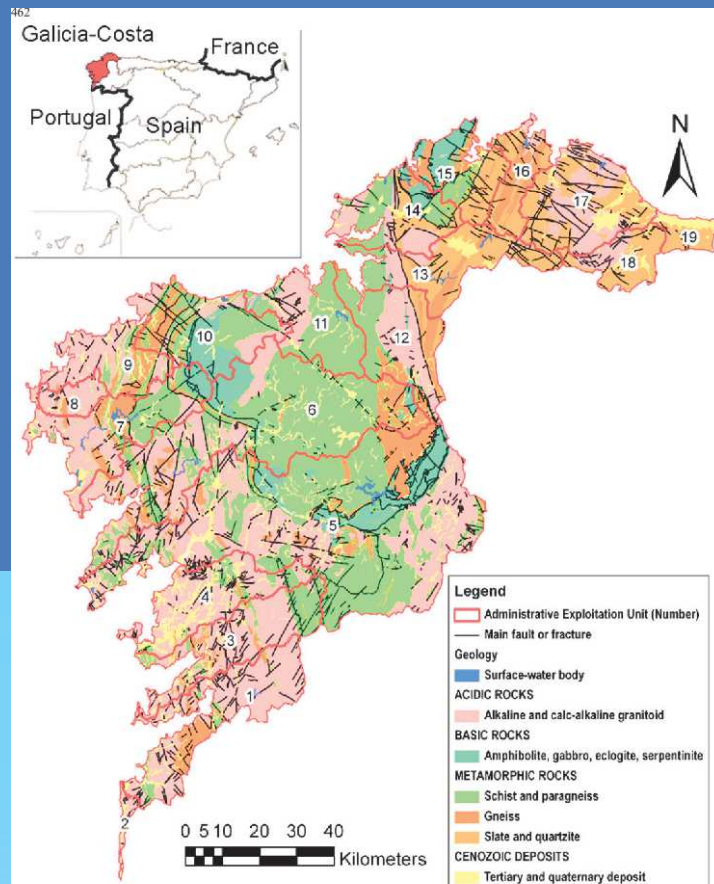
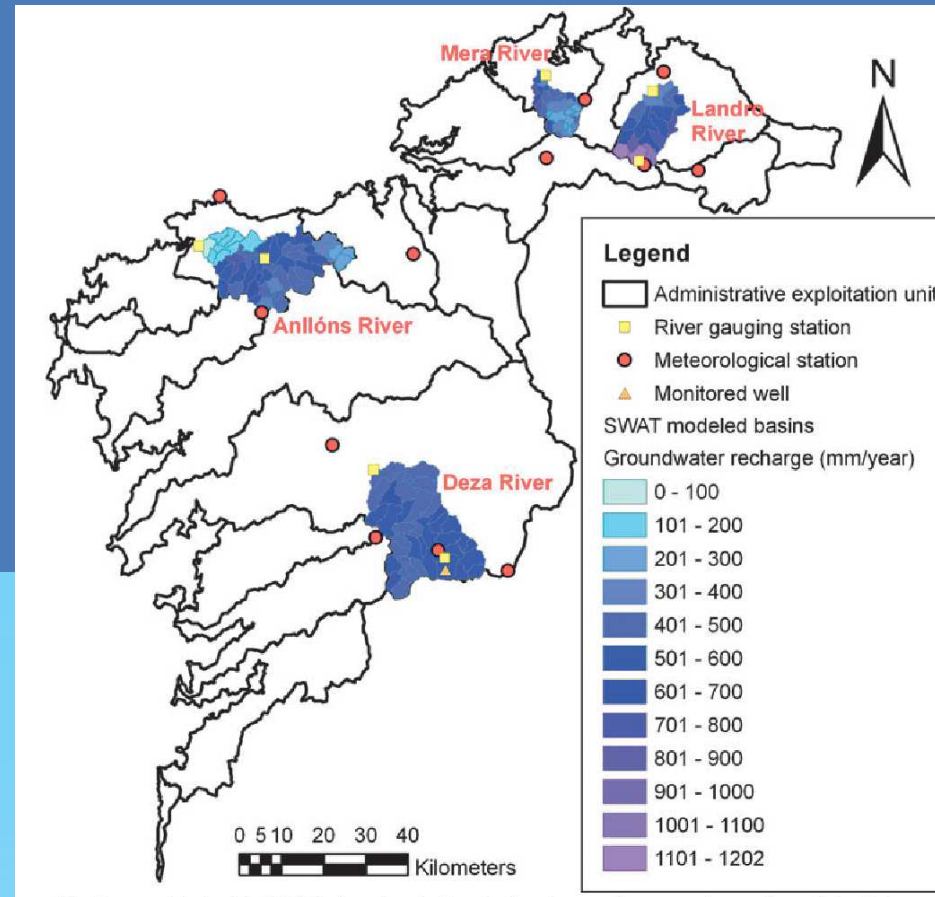
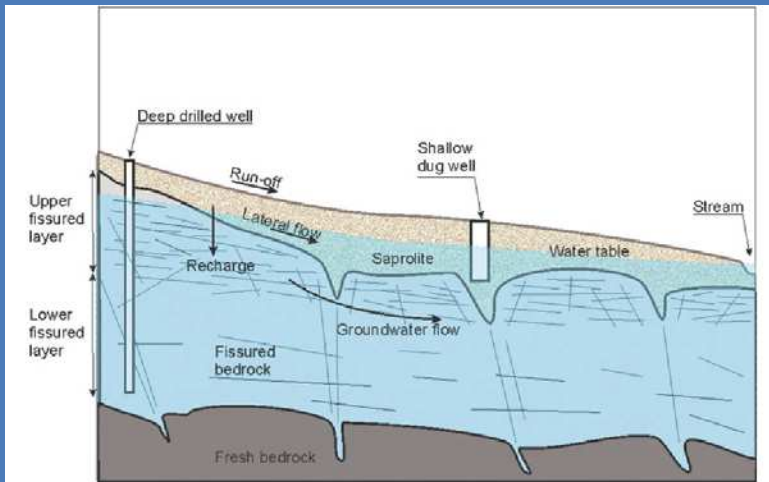


Fig. 1 Location of the hydrological district of Galicia-Costa within Spain (national boundaries in *thick line*) and within the Spanish

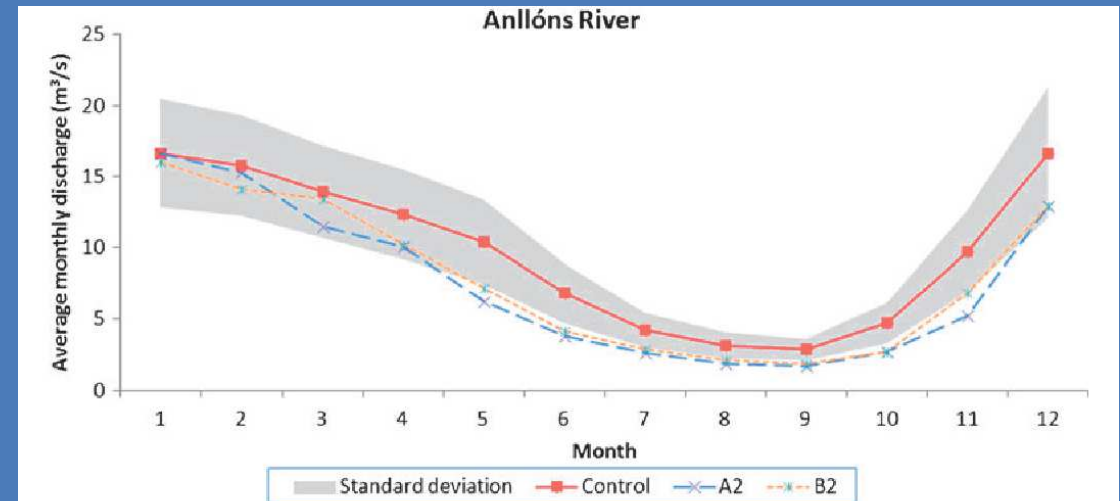


Map of basins modeled with SWAT showing their calculated groundwater recharge (by sub-basin)

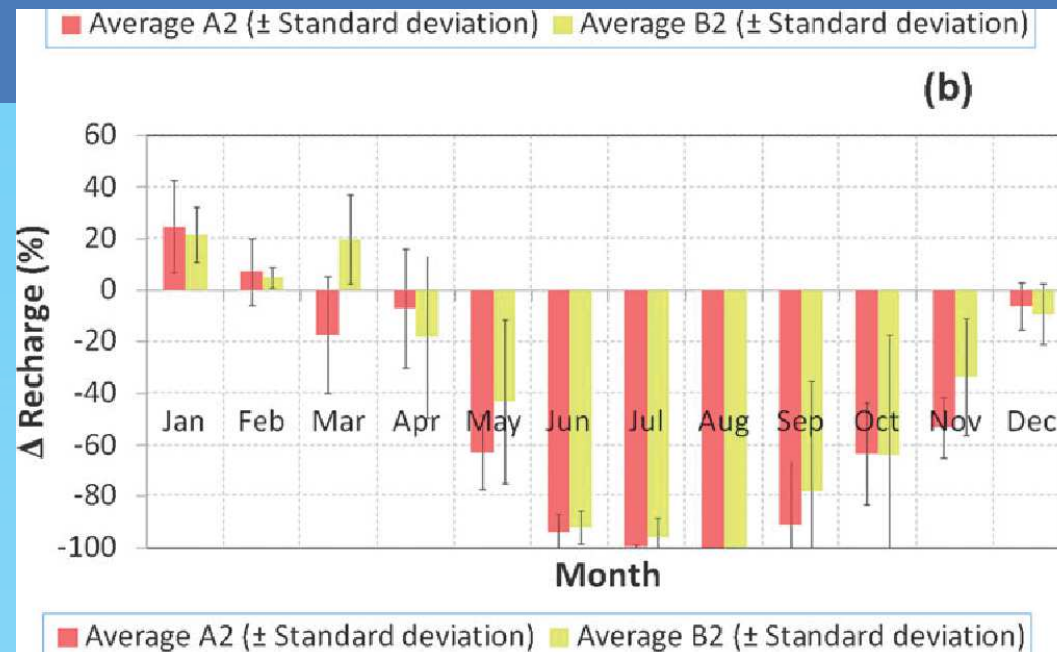
➤ Assessing the impact of future climate change on groundwater recharge in Galicia-Costa, Spain (2013):



Geological conceptual model for Galician fissured aquifers in crystalline rock (the blue colour represents the saturated zone)



Monthly average computed discharge during the control period versus average computed discharge under A2 and B2 scenarios



➤ ACID DRAINAGE OF LEACHED WATERS FROM APARRAL ENBANKMENT OF THE AG-64 HIGHWAY: HYDROLOGICAL STUDY AND THE POLLUTION OF THE CHAMOSELO RIVER (AS PONTES, A CORUÑA) (2019):



Fig. 2. Trinchera de "Os Airios" (Fuente: Google Street View).

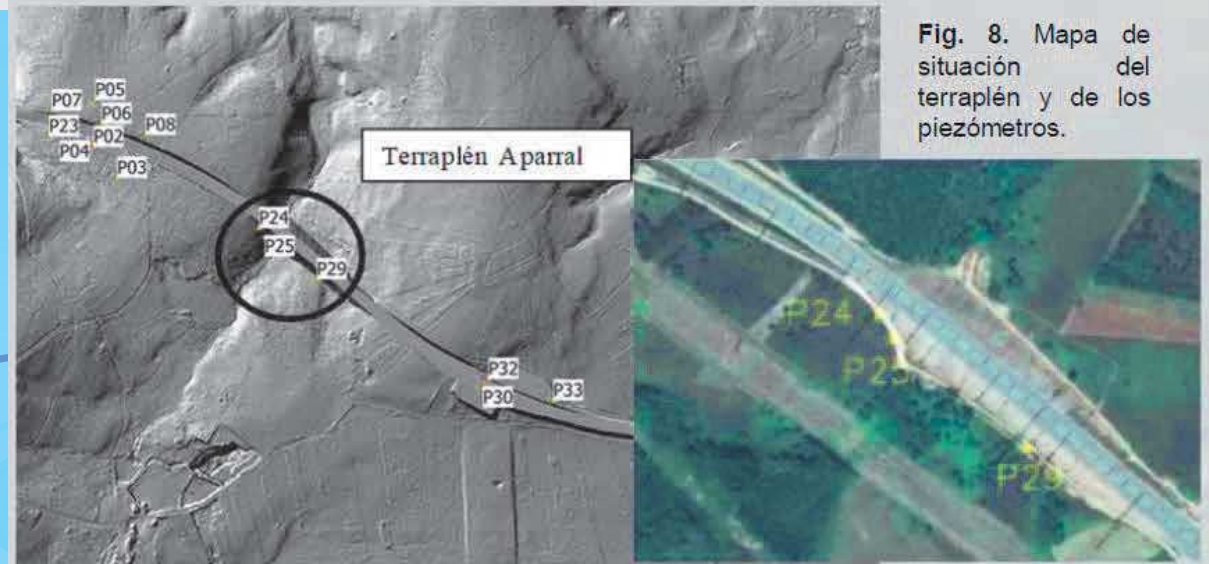


Fig. 8. Mapa de situación del terraplén y de los piezómetros.

➤ DRENAJE ÁCIDO DE AGUAS LIXIVIADAS DESDE EL TERRAPLÉN DEL APARRAL DE LA AUTOVÍA AG-64: ESTUDIO HIDROLÓGICO Y DE LA CONTAMINACIÓN DEL RÍO CHAMOSELO (AS PONTES, A CORUÑA) (2019):



Fig. 2. Trinchera de "Os Airios" (Fuente: Google Street View).

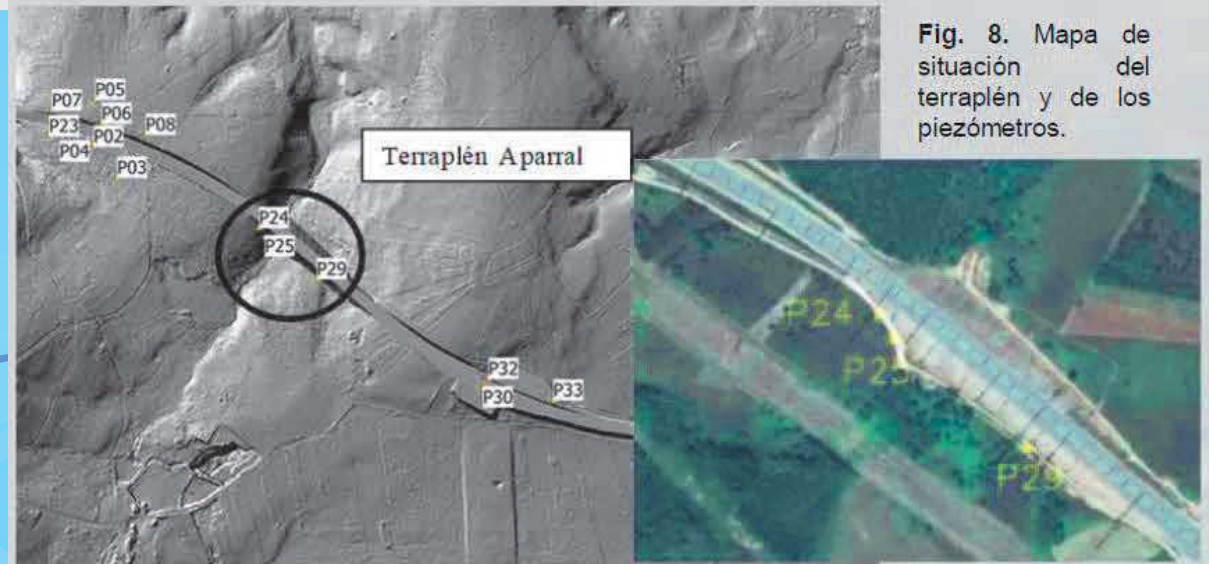


Fig. 8. Mapa de situación del terraplén y de los piezómetros.

➤ ACID DRAINAGE OF LEACHED WATERS FROM APARRAL ENBANKMENT OF THE AG-64 HIGHWAY: HYDROLOGICAL STUDY AND THE POLLUTION OF THE CHAMOSELO RIVER (AS PONTES, A CORUÑA) (2019):



Fig. 9. Niveles piezométricos y pH en los piezómetros P24, P25 y P29

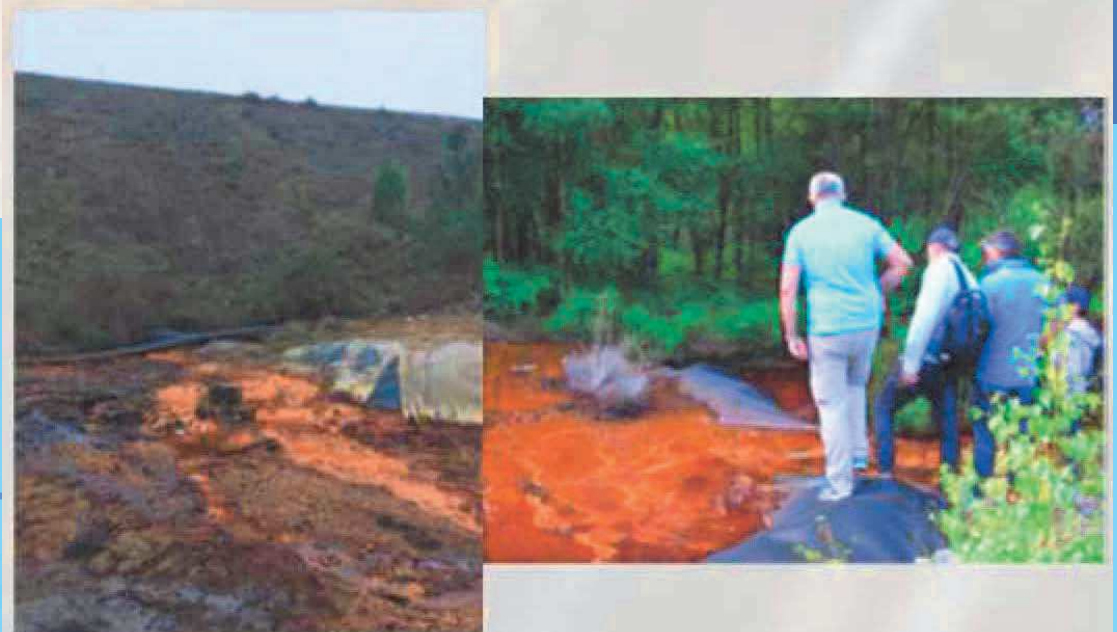
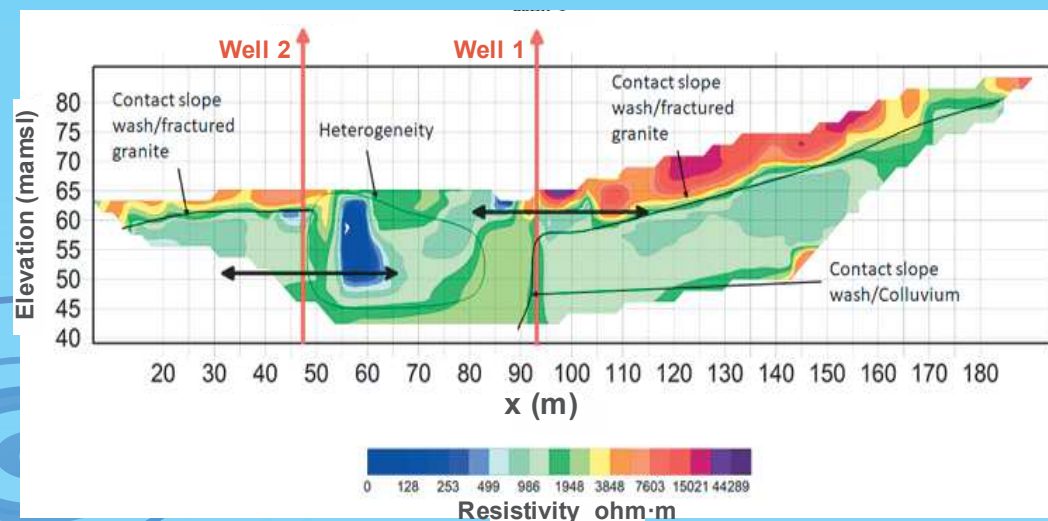
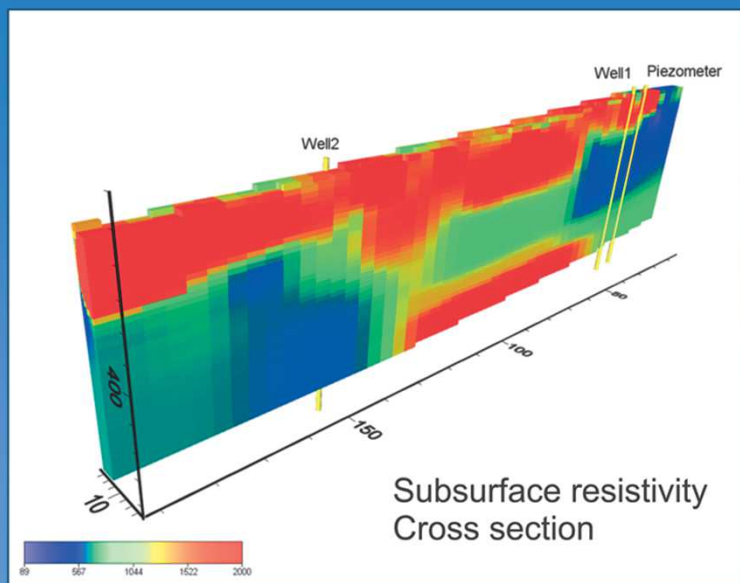
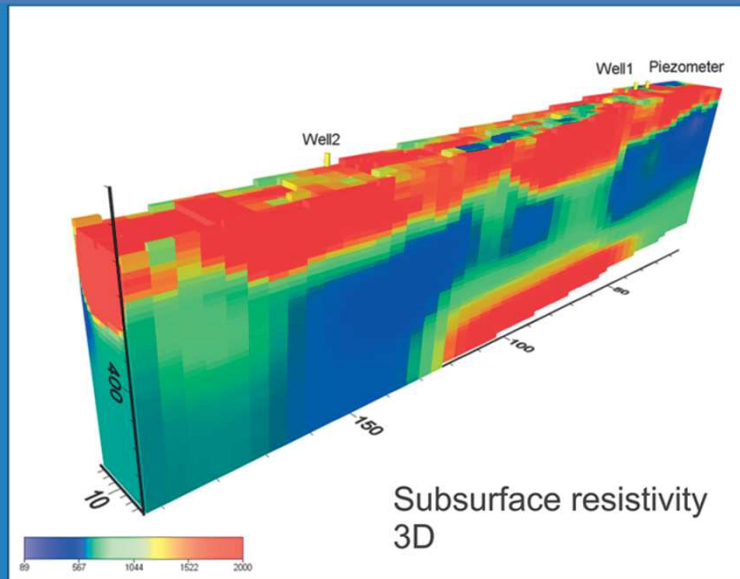


Fig. 7. Drenaje aguas abajo del terraplén.

Electrical resistivity tomography

is a geophysical technique for imaging sub-surface structures from electrical resistivity measurements made at the surface



Soil electrical conductivity measured using electromagnetic induction with EM38DD (Geonics Ltd.)

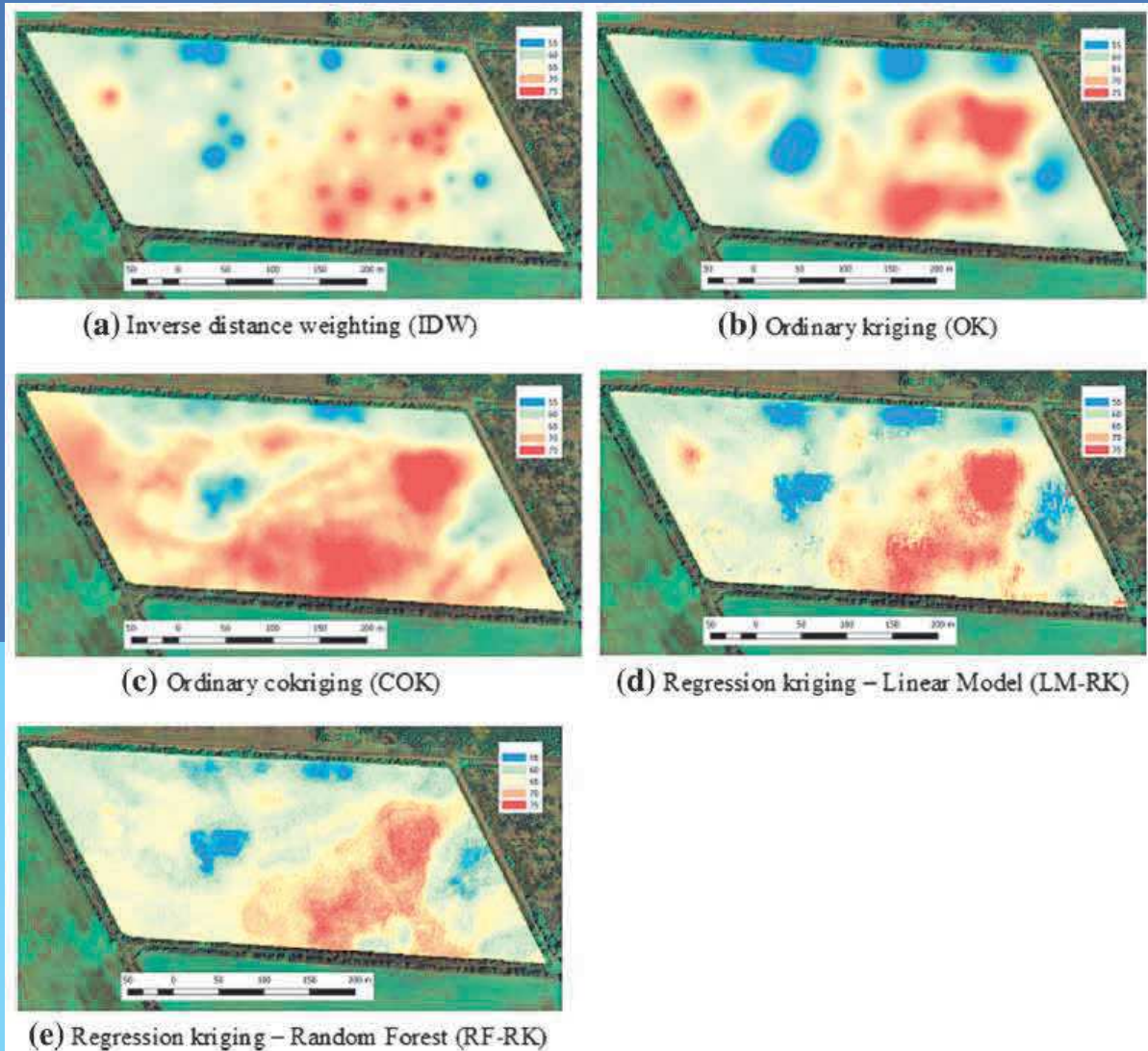


Fig. 4 Estimation maps of SOM generated by inverse distance weighting (IDW), ordinary kriging (OK), ordinary cokriging (COK), regression kriging (LM-RF) and regression kriging random forest (RF-RK) (units are g kg^{-1})

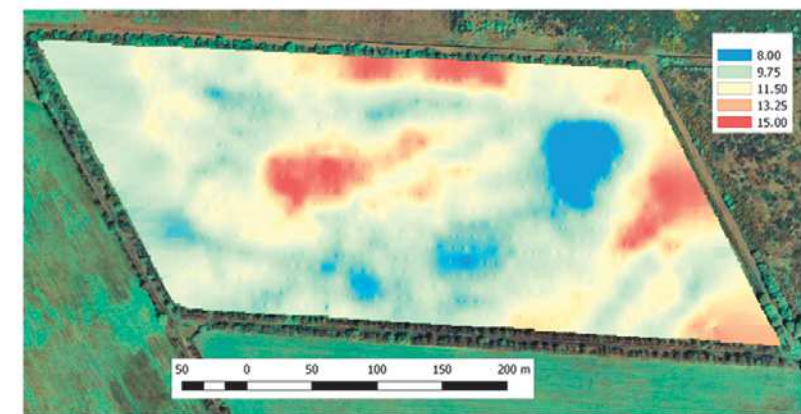
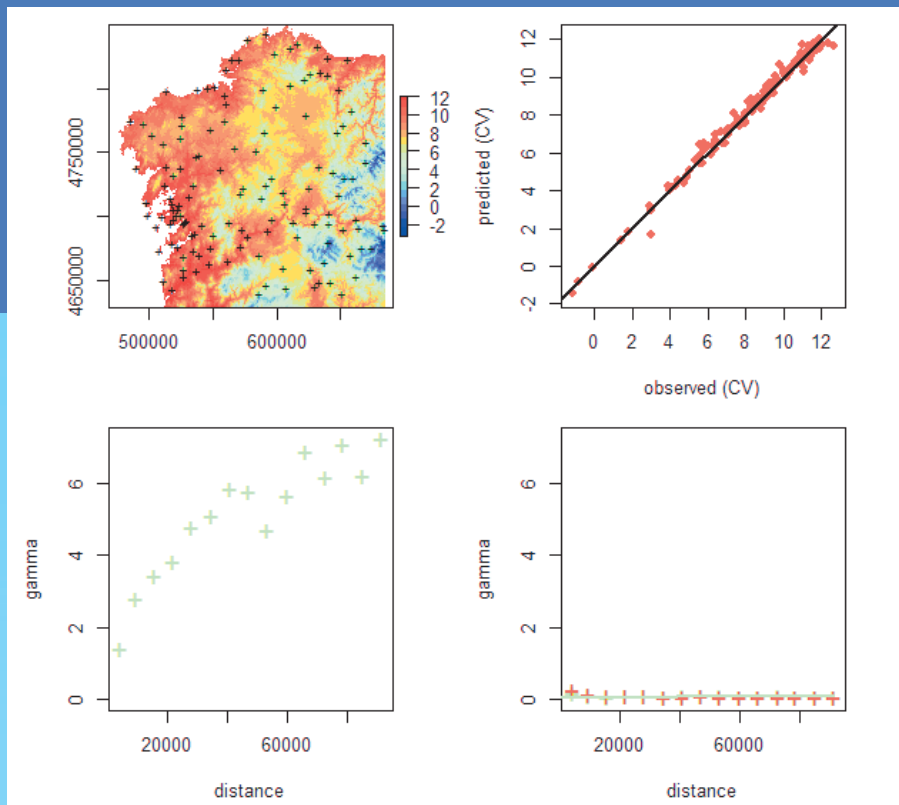


Fig. 3 Estimations map of $\text{EC}_a\text{-V}$ generated by ordinary kriging (units are mS m^{-1})

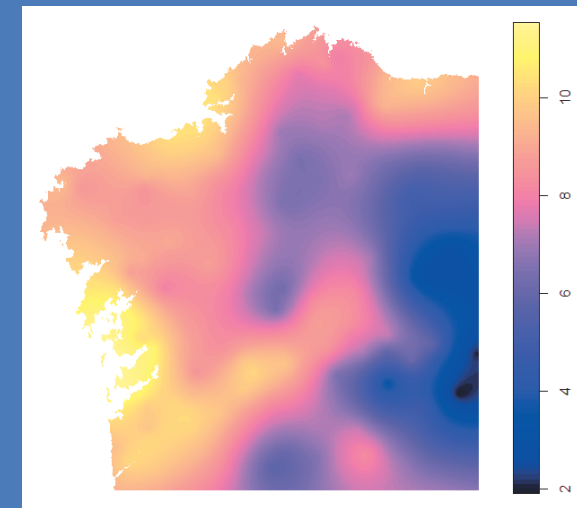
Geostatistics is a branch of statistics focusing on spatial or spatiotemporal datasets using R.

R is a programming language and free software environment for statistical computing and graphics

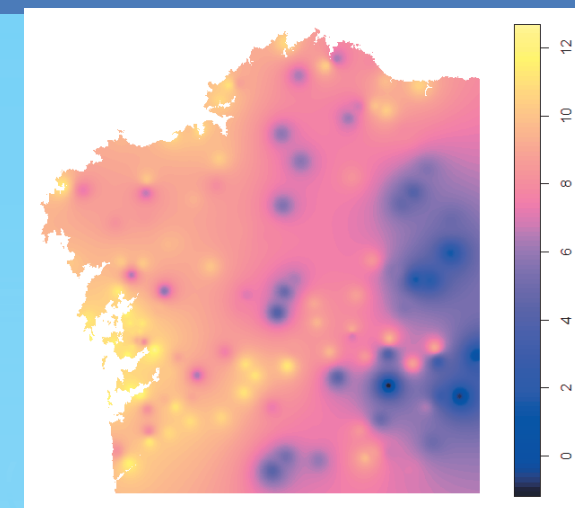
Air mean temperatura 21/3/2017 (day 3825) model r^2 0,9869



Regresion kriging (RK)

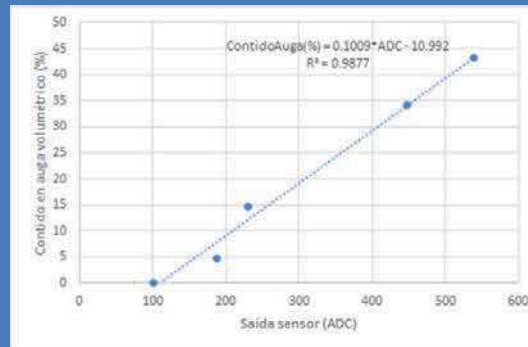
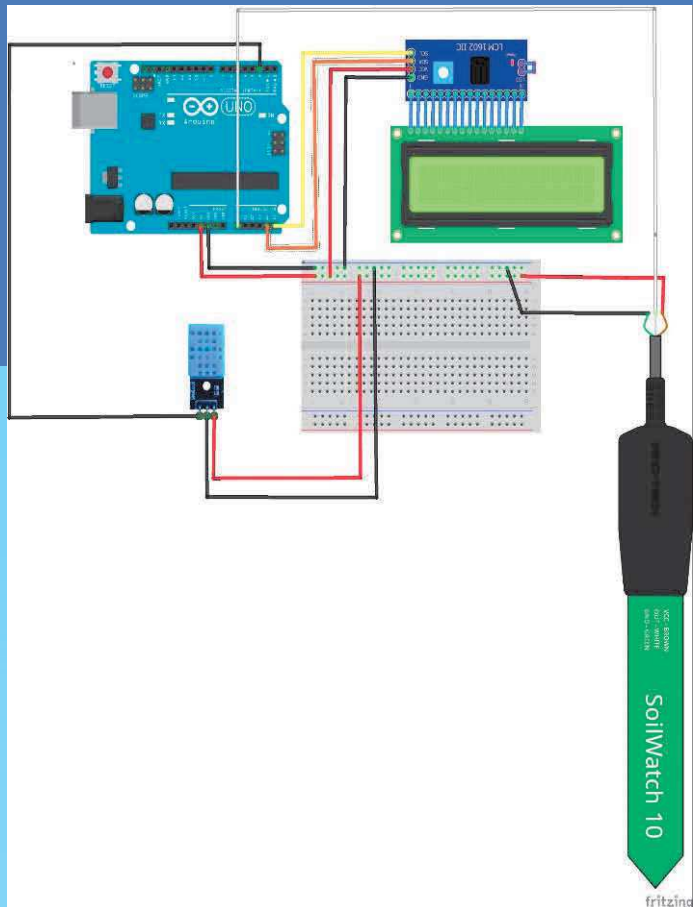


Ordinary kriging(OK)

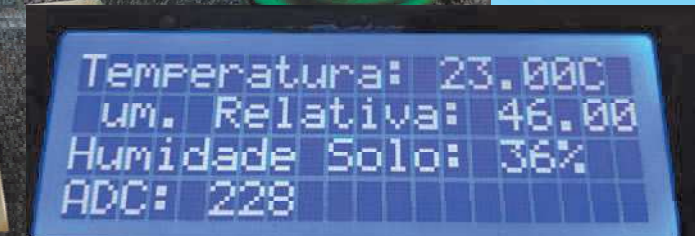


Inverse distance weighting(IDW)

Open-source hardware (OSH) consists of physical artifacts of technology designed and offered by the open-design movement. Arduino is an open-source hardware and software company, project and user community that designs and manufactures single-board microcontrollers and microcontroller kits for building digital devices.



Device for measure air temperature and humidity, soil water content with LCD screen, record data in microSD and wifi or lan internet connection





CECRA

Certificate for European Consultants in Rural Areas

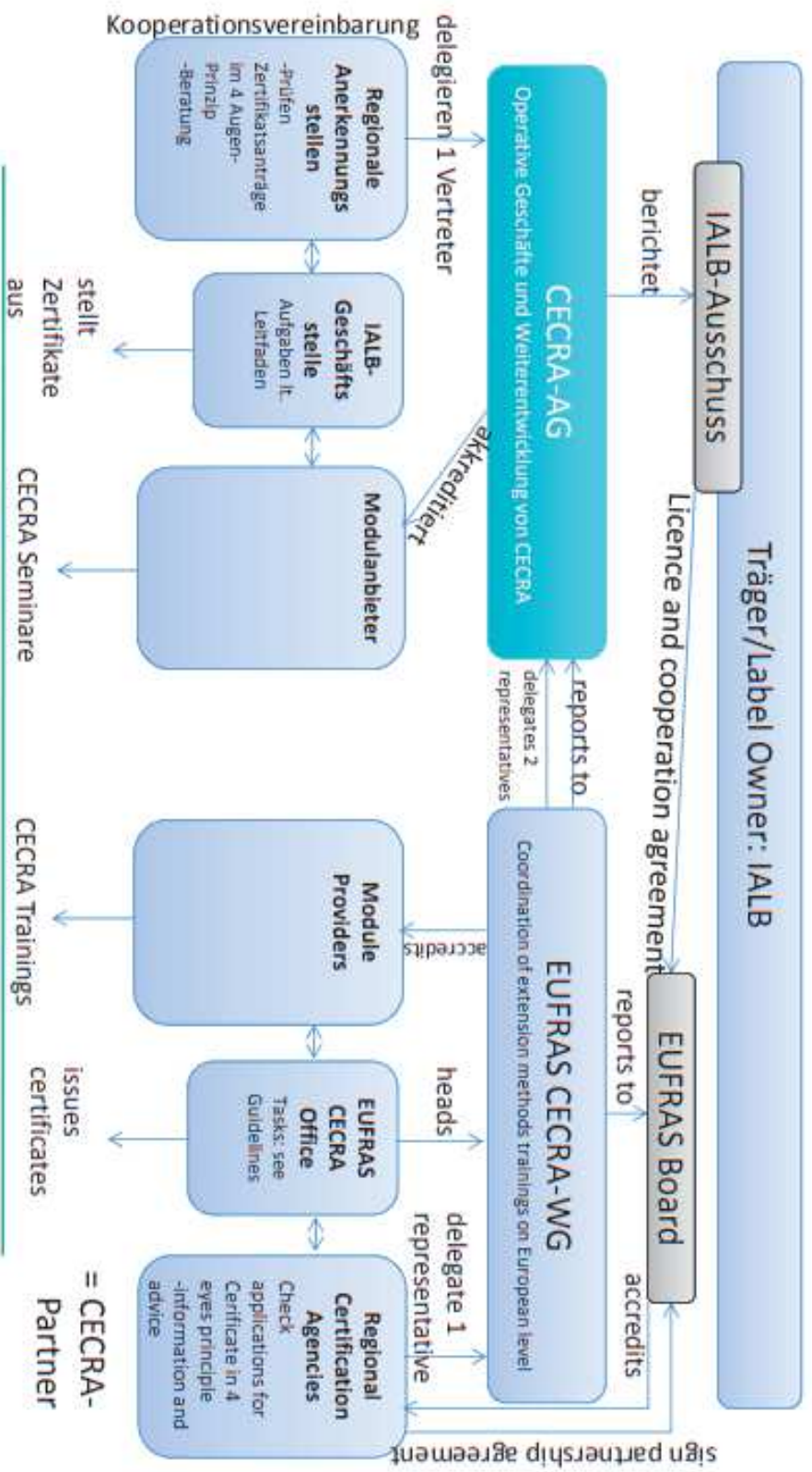
<http://www.cecra.net>



¿What is CECRA?

- Certificate for European Consultants in Rural Areas geared to developing methodological, social and personal advisory skills.
- Under the umbrella of the IALB (International Academy for Rural Advisory Services- Germany)
- Standards were compiled over a four-year project phase (2009 – 2012).
- Focus on advisors for agricultural and household extension services and additional actors in the rural area, such as Local Actions Groups.

Enhanced CECRA-structures: With the involvement of EUFRAS, the organization was duplicated



USC = Spanish RCA

Task of a Regional Certification Body

- To translate and updating of CECRA documents.
- To publish their CECRA annual program.
- To receive the candidates' applications for "CECRA Basics" and "CECRA Certificate".
- To charge certification fees.
- To manager the certification process (together with a second certification body, in keeping with the 'four-eyes' principle) and decide on certification, and forward applications with their decision or EUFRAS CECRA Office.
- Provide bodies for the cross-border research visits.
- Carry out a preliminary assessment / benchmarking for the participants, as required.

Programa Anual CECRA. 2018

Los módulos de CECRA se basan en un plan de estudios común. El programa consiste en dos módulos obligatorios que han de cursar todos los participantes (módulos número 1 y 2) y en quince módulos optativos, de los cuales habrán de ser completados al menos tres, para poder optar a la certificación CECRA (módulos número 3 a 17). La oferta cambia de año en año. El programa de módulos que ofrecen las Entidades Acreditadas para el año 2018 es el siguiente:

Módulos obligatorios

- M01** Capacidades del asesor/a en Areas Rurales. Módulos.
- M02** Comunicador y relaciones en el asesoramiento.

Módulos optativos:

- M03** Liderazgo y trabajo en equipo
- M04** Retórica/Presentaciones
- M05** Gestor del tiempo
- M06** Gestor de Proyectos
- M07** Organización de programas de asesoramiento
- M08** Relaciones en el cambio / Gestor del cambio
- M09** La práctica de la moderación en el asesoramiento
- M10** Marketing del asesoramiento
- M11** Planificación y desarrollo de eventos
- M12** Asesoramiento y apoyo de grupos y Equipos
- M13** Fundamentos de la mediación
- M14** Asesoramiento y apoyo a las empresas en las cuestiones estratégicas
- M15** Introducción al Coaching
- M16** Gestor de la innovación
- M17** Fundamentos de la participación.

Eventos válidos para cumplir requisitos complementarios del Certificado CECRA

- (como parte también en combinación simultánea con la participación en otro módulo CECRA optativo)
- IALB-Congreso, Győr (H)** 17. - 21.06.2018
 - IALB-Semana en red, Roudscholshausen (D)** 03. - 10.06.2018

LEL, Schwäbisch Gmünd (D)	
1	17.02.2018 - 25.02.2018 18.09.2018 - 19.09.2018
2	13.03.2018 - 14.03.2018 09.10.2018 - 10.10.2018
4	11.09.2018 - 12.09.2018
7	03.07.2018 - 04.07.2018
8	11.04.2018 - 12.04.2018
9	26.06.2018 - 27.06.2018
10	07.03.2018 - 08.03.2018
13	04.06.2018 - 05.06.2018
14	22.02.2018 - 23.02.2018

AGRIDEA, Lindau (CH)

- 1, 2, 4, 24.04.2018 - 26.04.2018
- 2, 14, 2, 14, 14.09.2018
- 7, 20.08.2018 - 22.08.2018
- 8, 03.06.2018 - 10.06.2018
- 9, 17.04.2018 - 19.04.2018
- 15, 22.10.2018 - 24.10.2018
- 16, 26.06.2018 - 28.06.2018

LLH, Roudscholshausen (D)

- 1, 19.02.2018 - 20.02.2018
- 2, 05.03.2018 - 06.03.2018
- 3, 16.04.2018 - 17.04.2018
- 4, 14.05.2018 - 15.05.2018
- 5, 06.08.2018 - 07.08.2018
- 6, 28.11.2018 - 29.11.2018
- 8, 06.06.2018 - 10.06.2018
- 9, 20.08.2018 - 21.08.2018
- 13, 14.11.2018 - 15.11.2018
- 15, 03.12.2018 - 04.12.2018

Facultad de Pedagogía Agraria y Ambiental, Viena (A)

- 13, 23.05.2018 - 24.05.2018

entra, Winnweiler (D)	
1	15.05.2018 - 16.05.2018
2	11.09.2018 - 12.09.2018
3	04.06.2018 - 05.06.2018
12	04.09.2018 - 05.09.2018

Andreas Hermes Akademie, Bonn (D)

- 1, 03.07.2018 - 05.07.2018
10.07.2018 - 12.07.2018
- 2, 11.09.2018 - 13.09.2018
- 3, 20.11.2018 - 22.11.2018
- 4, 26.03.2018 - 28.03.2018
- 5, 04.06.2018 - 06.06.2018
- 8, 16.10.2018 - 17.10.2018
- 12, 12.09.2018 - 13.09.2018

Doppelspitzencoaching, Wetzlar (D)

- 1, 24.05.2018 - 25.05.2018
- 2, 08.11.2018 - 09.11.2018

FuAk, Landshut (D)

- 2, 15.01.2018 - 17.01.2018
- 5, 24.07.2018 - 26.07.2018
- 6, 18.06.2018 - 19.06.2018
- 7, 18.09.2018 - 20.09.2018
- 13, 27.11.2018 - 28.11.2018

koine GmbH, Freising (D)

- 1, 21.02.2018 - 23.02.2018
15.05.2018 - 16.05.2018
- 2, 18.04.2018 - 19.04.2018
20.06.2018 - 21.06.2018
- 4, 08.11.2018 - 09.11.2018
- 6, 26.02.2018 - 27.02.2018
17.12.2018 - 18.12.2018
- 13, 15.11.2018 - 16.11.2018

USC, Lugo (ES)	
1	06.03.2018 - 07.03.2018 20.03.2018 - 21.03.2018 11.05.2018 - 12.05.2018 26.06.2018 - 27.06.2018 06.07.2018 - 07.07.2018 23.03.2018 - 24.03.2018 29.06.2018 - 30.06.2018 20.07.2018 - 21.07.2018 19.10.2018 - 20.10.2018 26.10.2018 - 27.10.2018 25.05.2018 - 26.05.2018 09.11.2018 - 10.11.2018 23.11.2018 - 24.11.2018 09.03.2018 - 10.03.2018
2	
6	
9	
12	
13	

Regional Certification Bodies

<p>AGRIDEA Eschikon, 28 CH-8315 - Lindau (Suiza) Persona de contacto: Marc Vuilleumier, cecra@agridea.ch</p>	<p>Suiza  ORGANISMO DEL CANTONE TIROL DEL SUD (SÜDTIROL) PER LO SVILUPPO DEL TERRITORIO RURALE SULLA LINEA DELLA AGRICOLTURA E DELLA FORESTAZIONE ENTWICKELUNGSGEMEINSCHAFT DER SÜDTIROLER</p>
<p>Provincia Autónoma de Bolzano, Dept. 22 de Agricultura, Montes y Formación Vocacional en Economía Doméstica. I-Bolzano (Italia) Persona de contacto: Dr. Philipp Nagel, philipp.nagel@provinz.bz.it</p>	<p>South Tyrol, Italia  </p>
<p>Facultad de Pedagogía Agraria y Ambiental. A-Viena (Austria) Persona de contacto: Liane Kaipel, liane.kaipel@agrarumweltpaedagogik.ac.at</p>	<p>Austria </p>
<p>Instituto Estatal para el Desarrollo Agrario y de las Áreas Rurales (LEL) D-Schwäbisch Gmünd (Alemania) Persona de contacto: Jürgen Käßer, cecra@lel.bwl.de</p>	<p>Baden-Württemberg, Alemania </p>
<p>Departamento de Agricultura del Estado de Hesse, Seminario de Formación de Rauischholzhausen. D-Kassel (Alemania) Persona de contacto: Dr. Beate Formowitz, cecra@llh.hessen.de</p>	<p>Hesse, Alemania </p>
<p>LMS Asesoramiento agrario GmbH D-Rostock (Alemania) D-Rostock (Alemania) Persona de contacto: Suzanne Otten, sotten@lms-beratung.de</p>	<p>Estados federales orientales, Alemania </p>
<p>Academia Estatal de Alimentación, Agricultura y Montes (FüAK) D-Landshut (Alemania) Persona de contacto: Martina Rabl, martina.rabl@fueak.bayern.de</p>	<p>Baviera, Alemania </p>

German speaking countries

Regional Certification Bodies (EUFRAS Area)

<p>LLKC - Ltd. Centro de Capacitación y Asesoramiento Rural de Letonia Rīgas iela 34, Ozolnieki, Ozolnieki parish, Ozolnieki county, LV- 3018 Letonia http://www.llkc.lv/ Persona de contacto: Andis Kursītis andis.kursitis@llkc.lv</p>	<p>Letonia</p> 
<p>TEAGASC - Autoridad de Agricultura y Desarrollo de Alimentos de Irlanda. Oak Park, Carlow, Ireland http://www.teagasc.ie/ Ireland Persona de contacto: Tom Kelly, Tom.Kelly@teagasc.ie</p>	<p>Irlanda</p> 
<p>USC - Universidade de Santiago de Compostela Escola Politécnica Superior de Ingeniería, C&amp;uacute;ampus Terra. E-27002 Lugo (España) Persona de contacto: Florentino D&iacute;az, florentino.diaz@usc.es</p>	<p>España</p> 
<p>C&acirc;mara de Agricultura y Montes de Eslovenia Kmetijsko gozdarska zbornica Slovenije, Gospodinjska ulica 6 1000 Ljubljana, Eslovenia http://www.kgz.si/ Persona de contacto: Anton Jagodic igor.hrovatic@kgzs.si, anton.jagodic@kgzs.si</p>	<p>Eslovenia</p> 
<p>LAAS -Servicio de Asesoramiento Agrario de Lituania Stoties g. 5, Akadernija 58343-K&eacute;dainiai d. (Lituania) http://www.lzukt.lt/ sonata.gabseviciene@lzukt.lt</p>	<p>Lituania</p> 
<p>NAAS - Servicio Nacional de Asesoramiento Agrario 7 Shosse Bankya 1331 - Sofia (Bulgaria) http://www.naas.government.bg/ enemanela@naas.government.bg</p>	<p>Bulgaria</p> 

Non-German speaking countries

¿Why to train in interpersonal skills?

- The advisory process is a target- and solution-oriented communicative relationship between client and advisor.
- The advisor must possess sound social, personal and communication competencies, as well as expert knowledge to successfully guide advisory processes.
- In addition to advising individual enterprises, this involves supporting cooperatives, asotiations and cross-sector advisory projects, as well as organizing adult-education provision.
- The advisor must be able to properly assess the personalities and situations of clients, in order to deal with them respectfully and support them empathetically

Professional skills

Methodological

- Organisation of advisory processes in their different stages (relationship building, clarification of tasks, etc.)
- Understanding of one's role and advisory models (client-centred advice, etc.)
- Project management
- Moderation skills, media technology, visualization
- Process guidance, monitoring of processes of change
- Problem- and conflict-solving skills
- Adult and education management

Communication and social skills

- Ability to cooperate, work in a team, and network
- Conversational skills (basics of communication, esteem, questioning techniques, active listening, etc.)
- Ability to form relationships
- Information literacy, high-profile knowledge transfer
- Ability to accept criticism; capable to handle conflicts

Personal (interpersonal and intrapersonal skills)

- Analytical faculties
- Personal appearance
- Self-organization
- Work organisation, working techniques, goal-oriented working
- Willingness to learn and change (change management)
- Intercultural competence
- Innovative thinking and acting
- Recognition of abilities and limits, reference to other specialists; Selfcare
- Self-reflection and reflection of work

Benefits

For consultants

- They acquire methodological, communicative, social and personal development knowledge .
- To gain experience with a strong practical orientation through participant-centred seminar work.
- To learn how to independently plan, execute, document, reflect on and evaluate individual and group advisory sessions, educational events, and projects.
- Reflect on their professional activity in their various advisory roles.
- To know like-minded colleagues as well as different advisory and educational bodies in other countries. **NETWORK**
- Earn a certificate providing cross-border confirmation of the relevant advisory skills according standards

For employers

- Enhances the efficacy/effectiveness of rural extension
- Staff with broader horizons
- To provide evidence to clients, supervisory authorities or funders that they are using qualified staff
- Impartial certificate issued by a public authority .
- Additional skills have the potential to reduce stress for consultants
- Positive image for the advisory organization

CECRA Basis and CECRA certificate



- Five CECRA modules (Module 1 and 2 are compulsory)
- Preparatory training: completed degree course or completed vocational training
- At least two years experiences in advisory work within the last seven years until application for CECRA certificate.
- Attendance at an international event .
- Visit of Advisory Centre/Advisory Services (at least 2.5 days) in another country or state.
- Submission of thesis (documentation and self-reflection based on a practical example)

Overview of the Modules

Each module consists of at least:

- 12 hours of physical presence (approx. 2 days).
- additional selfstudy (literature review, own in-depth studies, reflexion on personal case studies) with a minimum time investment of 18 hours.

Compulsory Modules	1. Personal Development / My Profile as a Consultant
	2. Communication and Building Relationships in Advisory Work
Elective Modules (min. of 3 modules according to individual choice)	3. Teamwork and Team Leadership
	4. Rhetoric / Presentation
	5. Self- and Time Management
	6. Project Management
	7. Shaping Advisory Processes
	8. Change Management
	9. Facilitation
	10. Marketing of Advisory Services
	11. Event Management
	12. Advising and Supporting Groups
	13. Essentials of Mediation
	14. Advising and Supporting Enterprises in Strategic Issues
	15. Introduction to Coaching
	16. Shaping Innovation Processes – Supporting networks
	17. Essentials of Participation

CECRA in Galicia

- Started in 2016.
- Pilot group of 30 Galician Rural Advisors
- International trainers (Germany and Switzerland).
- 7 modules between 2016 and 2017
- International event: IALB /EUFRAS Annual conference in Munster (Germany) in 2017.
- Visit to Agricultural Chambers in Northern Renania-Wesfalia for 2,5 days.
- In 2018 two persons from the USC has finished the International CECRA Train of Trainers Program (3 week in Germany).
- USC became first Regional Certification Agency and Content Provider in a non-German speaking country (2018).
- Nowadays: 15 advisors preparing the final thesis.



CECRA in Galicia

- In 2018 the Galician Regional Government adopted the CECRA Standard as a compulsory training for all Galician Rural Advisor (competitive bid won by the USC).
- 220 advisors trained in 2018 and 2019.
- 28 training modules (14 more for 2020)
- 4 Spanish trainers + 3 foreigners trainers (Germany and Switzerland)



LEADER (*)Local Action Groups

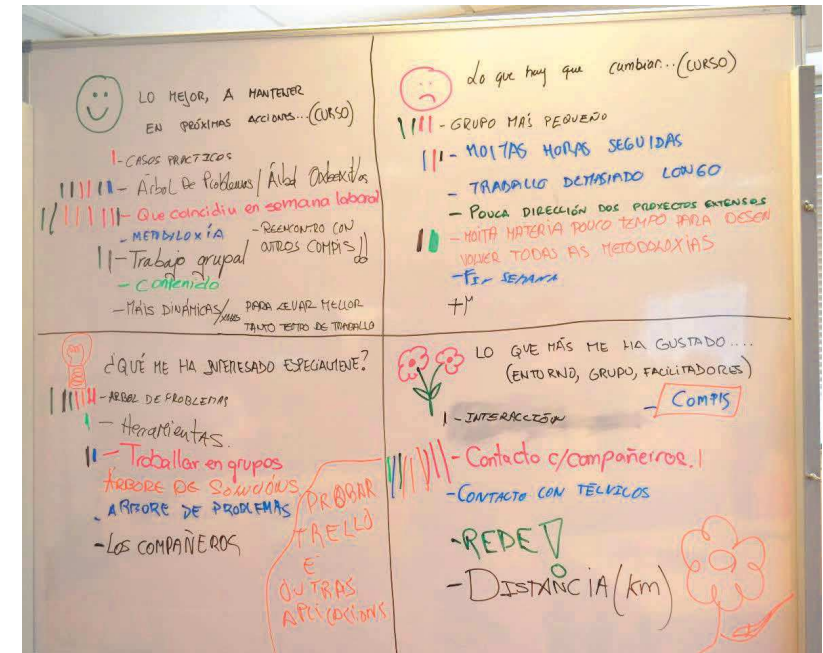
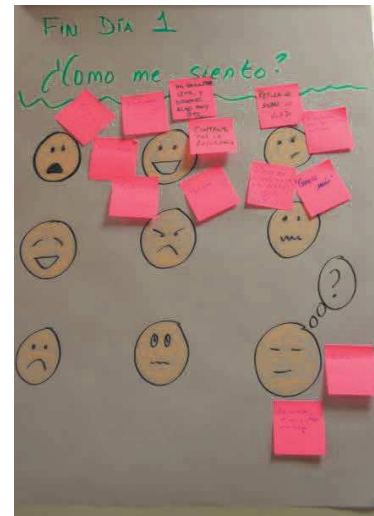
- At a provincial level (6 LAG from Lugo)
- Own resources.
- Voluntary.
- Non specific background (economics, law, administration)
- More than 10-15 years of experience as a LEADER Managers.
- Identify CECRA as useful to improve their job.
- Objective: Cecra accreditation.



** Links between actions for the development of the rural economy. EU Initiative*

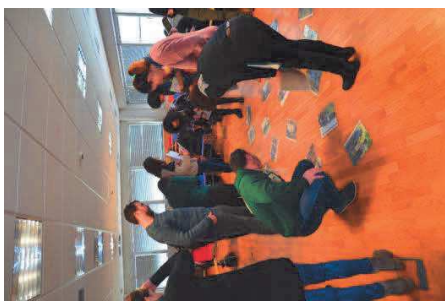
Evaluation

- Active methodology.
- Participatory approach.
- Short theoretical contents.
- Reflection on personal capacities and attitudes.
- The “Client Benefit” is the main objective.
- Peer to peer learning.
- Networking and network-> Organization.



- Self-esteem
- Highlight advisors experience and work.
- Transference.





DAIRY FARMS & ICT

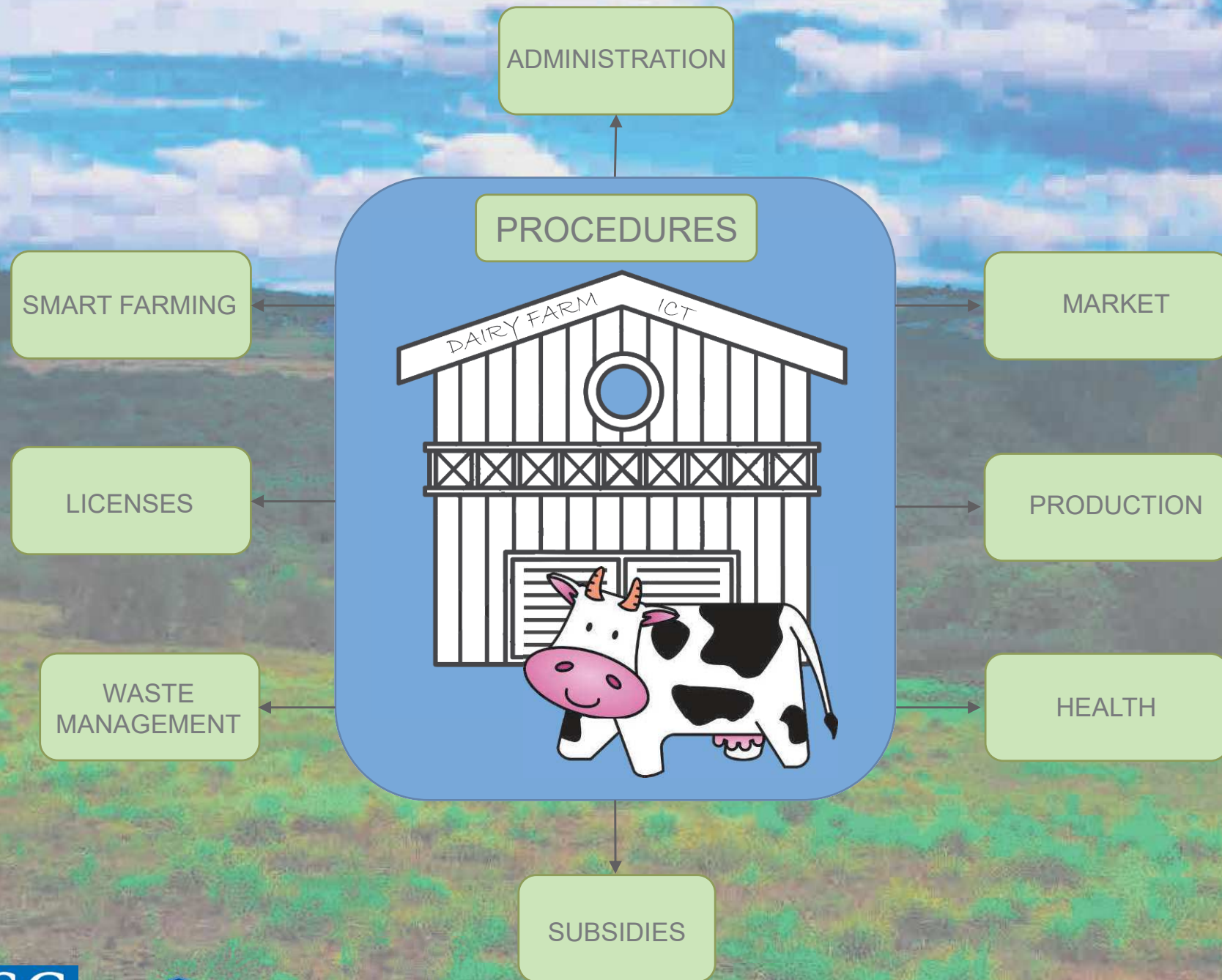


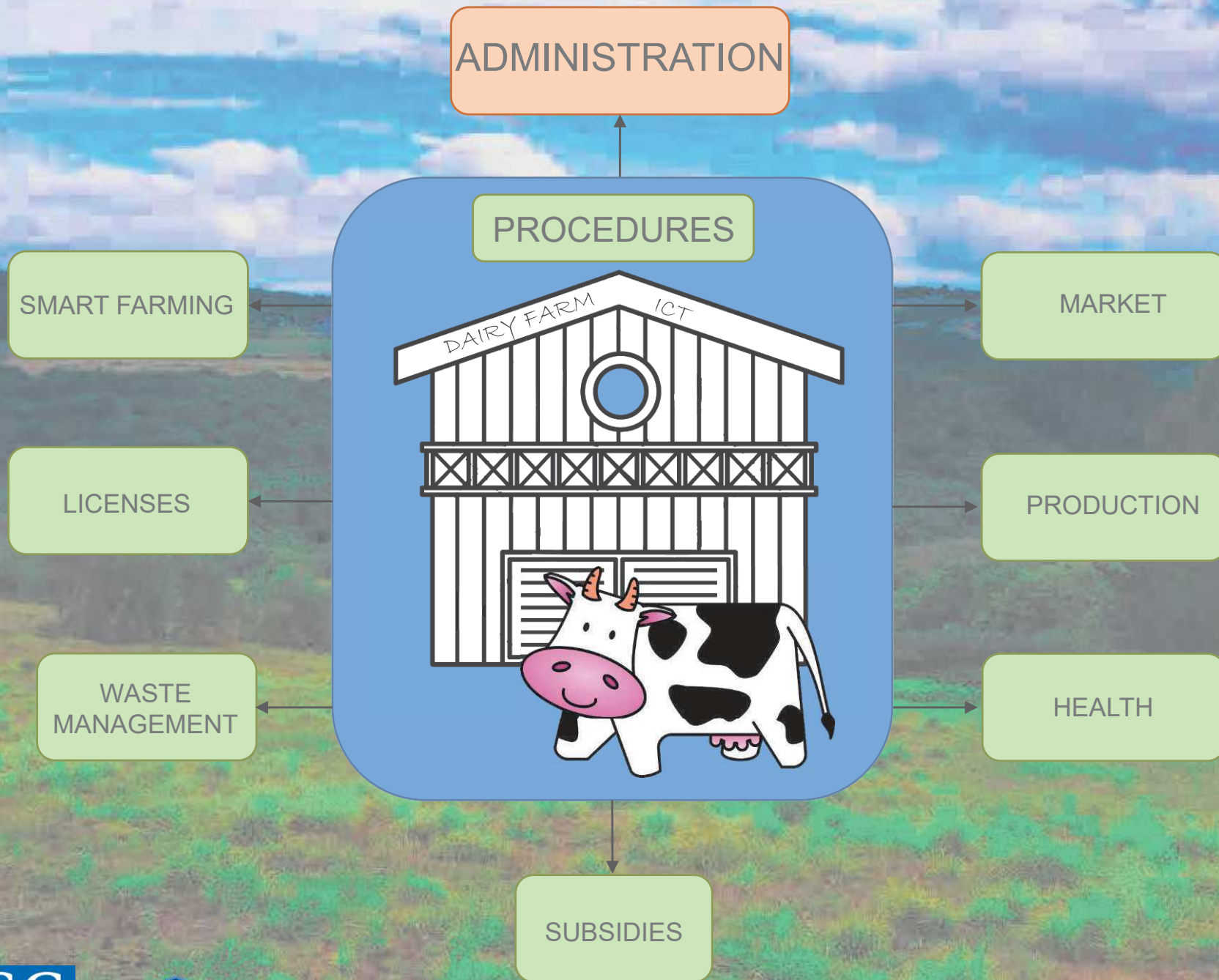
Dir:
Manuel F. Marey Pérez
Martín Barrasa Rioja

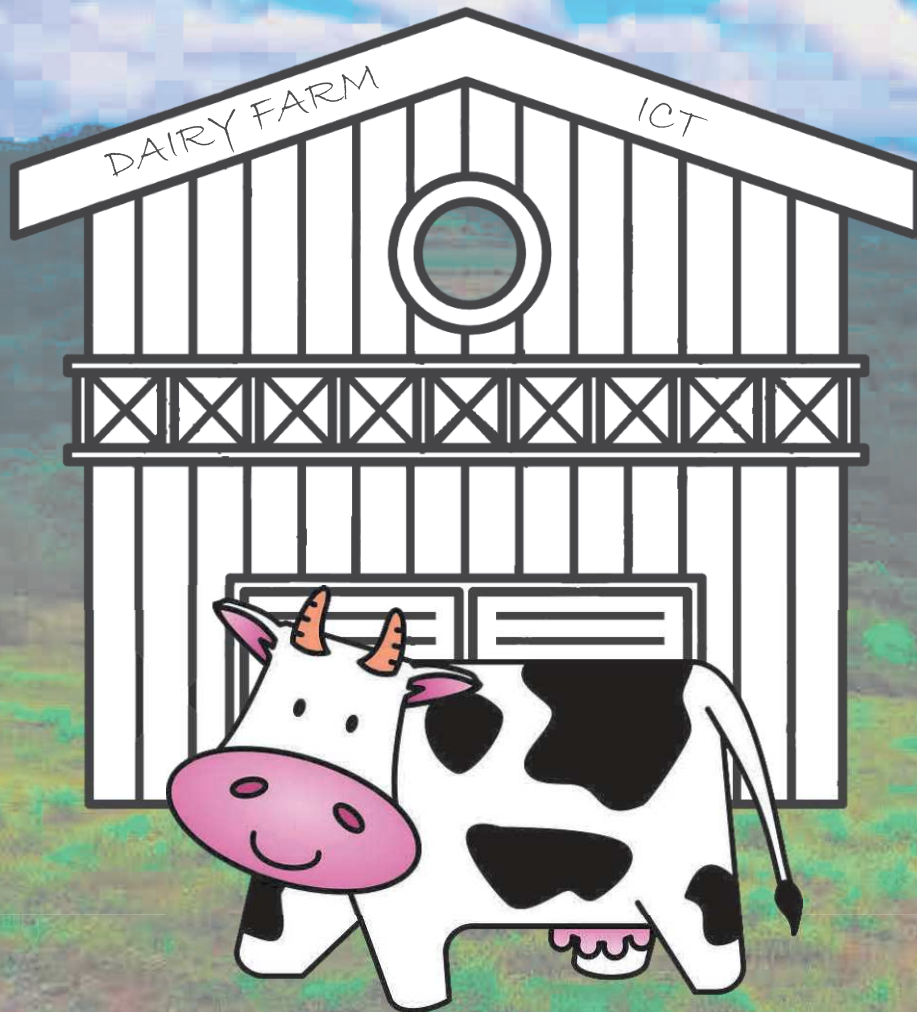
PhD student:
Alba Vázquez López

- For the last fifteen years, the enormous growth of the ICT (Information and Communication technologies) fostered the improvement of the economic and social development.
- In the rural context, the ICT appear as an opportunity to improve the rural business, allowing people to work remotely and to exchange information with their fellow members.









LAW OF ADMINISTRATIVE PROCEDURES

- Article 14 obliges all legal entities to relate to the administration through the use of the ICT.

GEO/TIME	2017 (T)
1 Bayern	8.255,95
2 Niedersachsen	7.050,45
3 Bretagne	5.607,07
4 Lombardia	4.873,45
5 Pays de la Loire	3.922,02
6 Normandie	3.885,18
7 Weser-Ems	3.553,19
8 Galicia	2.749,61
9 Auvergne - Rhône-Alpes	2.744,89
10 Vlaams Gewest	2.732,26

Dir:
Manuel F. Marey Pérez
Martín Barrasa Rioja

PhD student:
Alba Vázquez López

ADMINISTRATION PROCEDURES



Management of cattle movements through the use of FVO.



Oficina Agraria Virtual



XUNTA DE GALICIA
CONSELLERÍA DO MEDIO RURAL

Benvida

A oficina agraria virtual é unha ventanilla de atención ao usuario en Internet. Dende este punto atoparanse servizos orientados aos cidadáns tanto para consulta de datos de carácter persoal, como para a realización de trámites administrativos.

Para acceder aos servizos persoais proporcionados dende este sitio deberá posuír un usuario e contrasinal proporcionado pola Consellería, ou no seu lugar ter un certificado dixital da FNMT que o autentifique ante o sistema.

ACCESO PRIVADO

NIF / Cod. EI

Contrasinal

Lembrar contrasinal

Acceso a trámites que non necesitan autentificación:





XUNTA DE GALICIA

Copyright. Consellería do Medio Rural. Xunta de Galicia. Todos os dereitos reservados.




> Home

Authorization 

Consult 

Farms

Procedures 

Sistema Formas de cría

Capacidade

Tipo Convencional

Autoconsumo Anterior RD 324/00

▼ COTITULARES

NIF do titular	Nome do titular	Tipo
		Titular da explotación

▼ INFORMACIÓN SANITARIA

Cualificación sanitaria Cualificada sanitariamente Dende 01/02/16


	Nome	CIF	Código	
ADS	<input type="text"/>	<input type="text"/>	<input type="text"/>	
Integradora	<input type="text"/>	<input type="text"/>	<input type="text"/>	
Agrupación	<input type="text"/>	<input type="text"/>	<input type="text"/>	Prod. fases <input type="checkbox"/>
Veterinario habilit.	<input type="text"/>	<input type="text"/>	<input type="text"/>	


▼ ACREDITACIÓNS SANITARIAS

Xerar


Non hai xerada acreditación

> Home

Authorization 

Consult 

Farm book

Procedures 

Libro de explotación

[VOLVER](#)

SUBEXPLORACIÓN

Familia *


Especie *

REGA *

Titular
 Estado
 Dende
 Tipo expl.
 Cl. Zootécnica


PERIODO DO CONSULTA (MÁXIMO TRES ANOS ANTERIORES À DATA ACTUAL)


Libro de rexistro de explotación a data 


correspondiente ao periodo dende 

 Imprimir

> Home

Authorization 

Consult 

Procedures 

Birth registration

Paso 1
Cubrir datos

Paso 2
Confirmar datos


Paso 3
Finalizar

IDENTIFICACIÓN DA SOLICITUDE

Nº solicitude
Estado
Rex. Telemático
Solicitante
Nº de teléfono
Correo-e


SUBEXPLOTACIÓN

Familia * Especie * REGA *


Bóvidos Bóvidos ES270200010101 

Titular
Estado Alta
Dende 01/01/95
Tipo expl. Producción e reprodución
Cl. Zootécnica Rep. produción de carne

DATOS DO ANIMAL

Data Nacemento *  Raza *

Especie * Crotal Asignado *

Crotal da nai *  Sexo Macho Femia

Home

Authorization

Consult

Procedures

Eartag duplication

Duplicados de crotais < VOLVER

Paso 1 Cubrir datos | **Paso 2** Confirmar datos | **Paso 3** Finalizar

IDENTIFICACIÓN DA SOLICITUDE

Nº solicitude
 Estado
 Rex. Telemático
 Solicitante
 Nº de teléfono
 Correo-e

TIPO DE ENVÍO

Ordinario Certificado Urgente [Ver tipos de envíos e prezos](#)

LISTA DE DUPLICADOS A SOLICITAR

Nº de animais para os que solicita duplicado

Familia	REGA	Especie	Crotal	Cant.	Tipo crotal

DATOS DE CONTACTO

Se a solicitude non pode ser resolta instantaneamente quedará "En trámite" pendente de resolución. Sinale un enderezo electrónico e/ou un teléfono mobil se desexa ser avisado por correo e/ou SMS cando se faga efectiva a resolución.

Email Móbil

*** Campos obrigatorios** **Validar**

Rural virtual office.
It allows to search for procedures by thematic areas

Galego Castellano

Oficina virtual do medio rural

XUNTA DE GALICIA
CONSELLERÍA DO MEDIO RURAL

Todo o que debes saber ▾ Consultas públicas ▾ Servizos ▾

Área temática: gandería

a terra agricultura alimentación calidade concentración parcelaria emprego explotacións forestal

formación **gandería** incendios forestais industrias leite maquinaria montes prevención incendios

sanidade animal sanidade vexetal viticultura viveiros

Axudas da política agrícola comunitaria (PAC)

Entre os obxectivos da actual política agrícola comunitaria (PAC) atópanse os seguintes:

Garantir o abastecemento de alimentos á poboación europea, a prezos axeitados
 Garantir uns ingresos xustos aos agricultores e o benestar na sociedade rural
 Aumentar a competitividade dos produtos agrícolas comunitarios no mercado interior e mundial
 Mellorar a seguridade alimentaria coa mellora das condicións sanitarias dos animais e do seu benestar
 Asegurar a protección do medio ambiente

Laboratorio de Sanidade Animal

O Laboratorio de Sanidade e Produción Animal de Galicia (LASAPAGA) leva a termo os estudos, análises e ditames relacionados coa sanidade e coa hixiene dos animais, así como das producións gandeiras e dos medios de produción gandeiros nas materias relativas á sanidade animal. Tamén lle corresponde o control dos laboratorios privados adicados ás

Management of environmental licenses through a specific administration web.

FOGGA is a specific web of subsidies. It has a informative character and requires access password.



FOGGA
FONDO GALEGO DE GARANTÍA AGRARIA

XUNTA DE GALICIA
CONSELLERÍA DO MEDIO RURAL

INICIO O FOGGA PAC SIXPAC INTERVENCIÓN DE MERCADOS SECTOR LÁCTEO Buscar

Inicio

O Fondo Galego de Garantía Agraria (Fogga) é un organismo autónomo de carácter comercial e financeiro, creado pola lei 7/1994, do 29 de decembro, e adscrito á consellería do Medio Rural da Xunta de Galicia.

O Fogga é o organismo pagador dos fondos europeos agrícolas en Galicia: Fondo Europeo Agrícola de Garantía (Feaga) e o Fondo Europeo Agrícola para o Desenvolvemento Rural (Feader).

Directo a

- Campaña PAC 2019
- Axuda á redución da produción da leite
- Relación provisional réxime pequenos agricultores
- Beneficiarios tramo básico da axuda temporal excepcional vacún de leite (Real decreto 1077/2015)
- Taboleiro PAC

Localización

Xunta de Galicia
Ampliar el mapa

Xunta de Galicia - Consellería do Medio Rural

Contacto

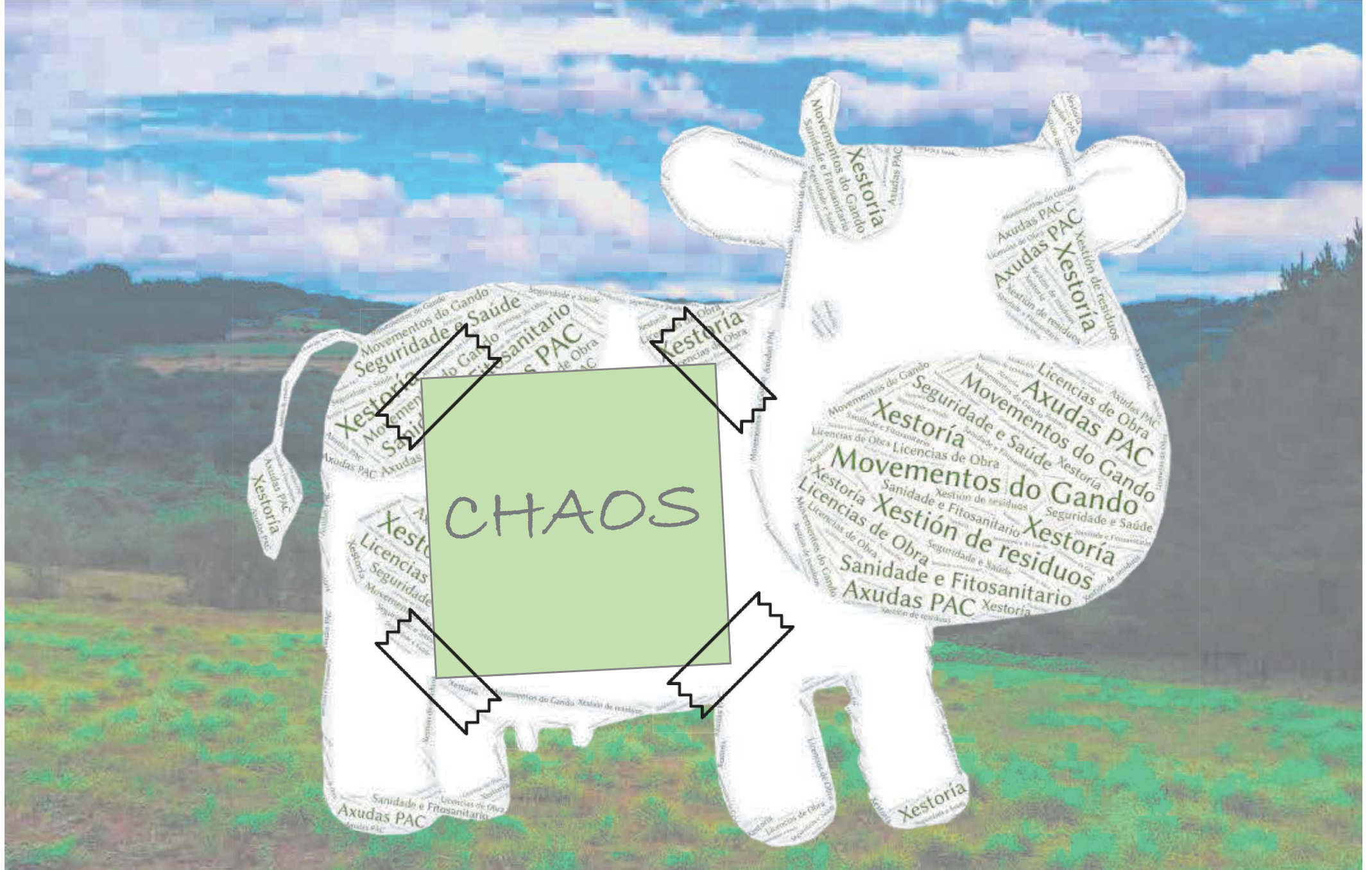
Teléfono: +00 34 981 546 283
+00 34 981 546 234

Fax: +00 981 546 268

E-mail: mediorural.fogga@xunta.es

Other procedures are carried out through another specific web "Chave365".

The screenshot shows the 'SEDE ELECTRÓNICA' website for the Xunta de Galicia. The page is in Spanish and features a blue header with the 'e!' logo and the text 'SEDE ELECTRÓNICA'. The Xunta de Galicia logo is also present. A navigation bar includes 'Trámites', 'La sede', '¿Para quién?', 'Ayuda', and 'Mi sede'. The main content area is titled 'Chave365' and describes the system for digital identification and signing. A sidebar on the left lists various services under 'Trámites', including 'Guía de procedimientos y servicios', 'Chave365', 'Cómo funciona', '¿Para qué se puede usar?', 'Dónde solicitar Chave365', 'Preguntas frecuentes', 'Verificación de documentos firmados', 'Descarga de certificados', 'Presentación de sugerencias y quejas', and 'Solicitud genérica'. A large graphic of the '365' logo is on the right, with an 'Escuchar' button below it. A '¿Necesita ayuda?' button is located at the bottom right of the page.



- There are many different webs for everyday procedures.
- They need many access identifications.
- Generic menus and not adapted to the type of activity.

The screenshots illustrate the user interface of the Xunta de Galicia's digital services. The top page, 'OAV Oficina Agraria Virtual', features a navigation bar with categories like 'Avaliación ambiental' and 'Prevenção e control de actividades'. The middle page, 'Oficina virtual do medio rural', includes a search bar and a navigation menu with options like 'Trámites' and 'Ayuda'. The bottom page, 'SEDE ELECTRÓNICA', provides detailed information about the 'Chave365' system, explaining how it allows users to identify themselves electronically and sign documents without the need for physical certificates.

SOLUTIONS PROPOSAL



- unification / homologation.
- To generate an app/web taking into account the global requirements, but also the farmer's point of view.
- Specific menus according to the type of activity (dairy farmers, sheep farmers, winegrowing...). It is fundamental that every user has his or her own profile with the specific procedures of his or her activity.
- Ease of usage. Bringing the web product closer to the user.



- "Technology is best when it brings people together".-Matt Mullenweg.













